



## BMW E82 1 Series Non-M Skid Plate Installation Instructions

Introducing the new Turner E82 1 Series Non-M Skid Plate! The Turner engineering team set out to design a no-compromise belly pan replacement which requires no major modification to the vehicle, and offers some serious protection for the bottom of your E82 1 Series! The finished product was this; the *ultimate* upgrade for your belly pan replacement woes.

Our heavy duty aluminum skid plate features a support bracket for extra strength and rigidity, and we provide all of the hardware you'll need for a quick and easy installation.

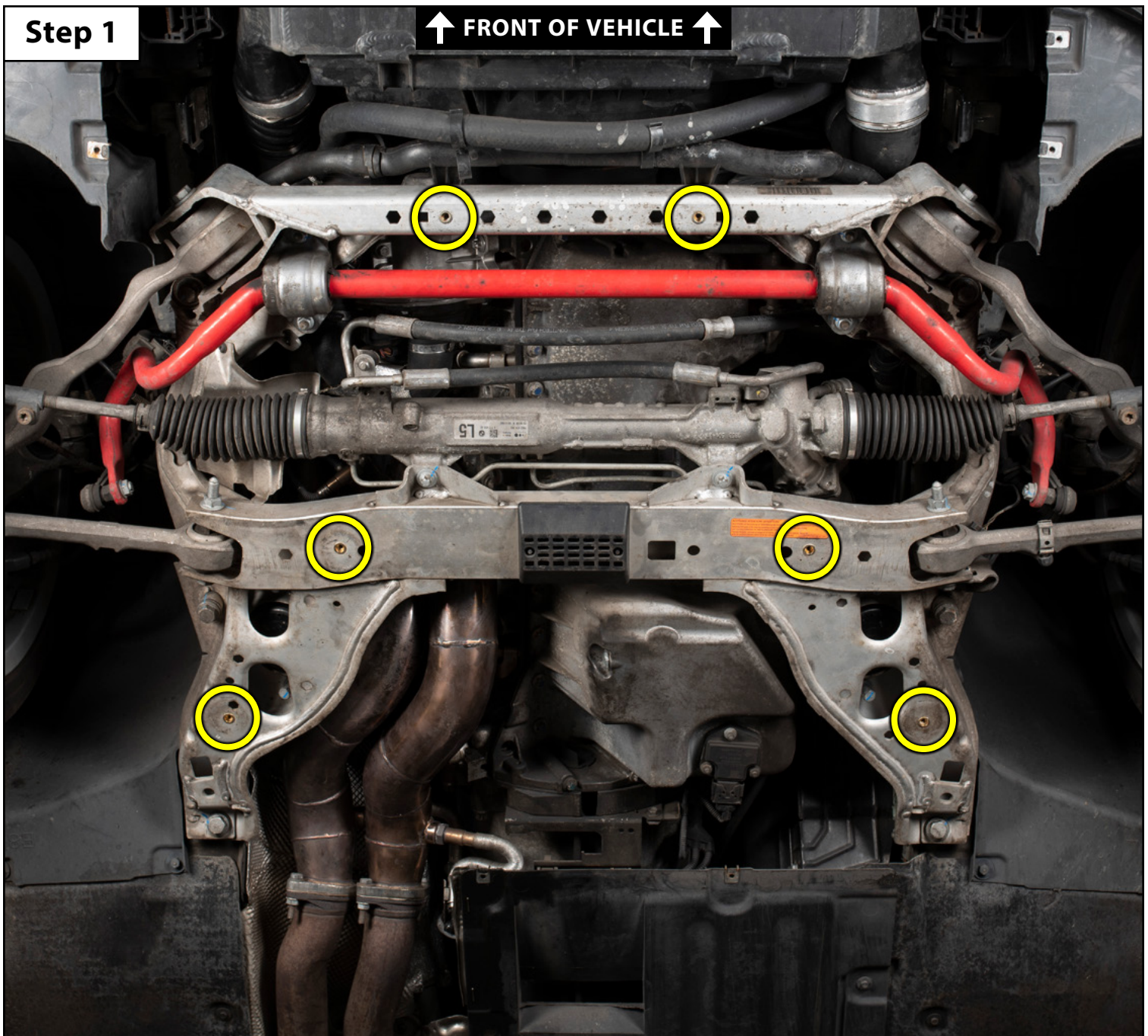
**Installation time:** 1 hour



Proper service and repair procedures are vital to the safe, reliable operation of all motor vehicles as well as the personal safety of those performing the repairs. Standard safety procedures and precautions (including use of safety goggles and proper tools and equipment) should be followed at all times to eliminate the possibility of personal injury or improper service which could damage the vehicle or compromise its safety.

# Installing the New Skid Plate Kit

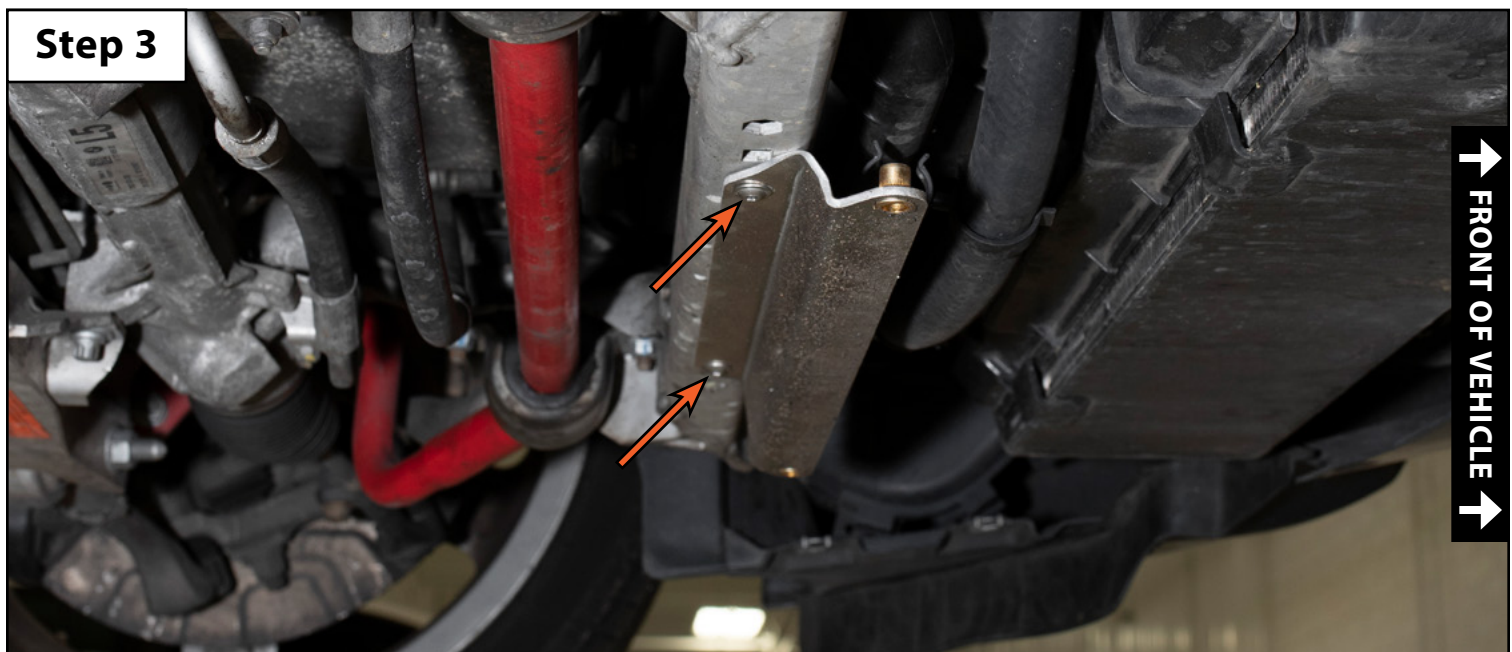
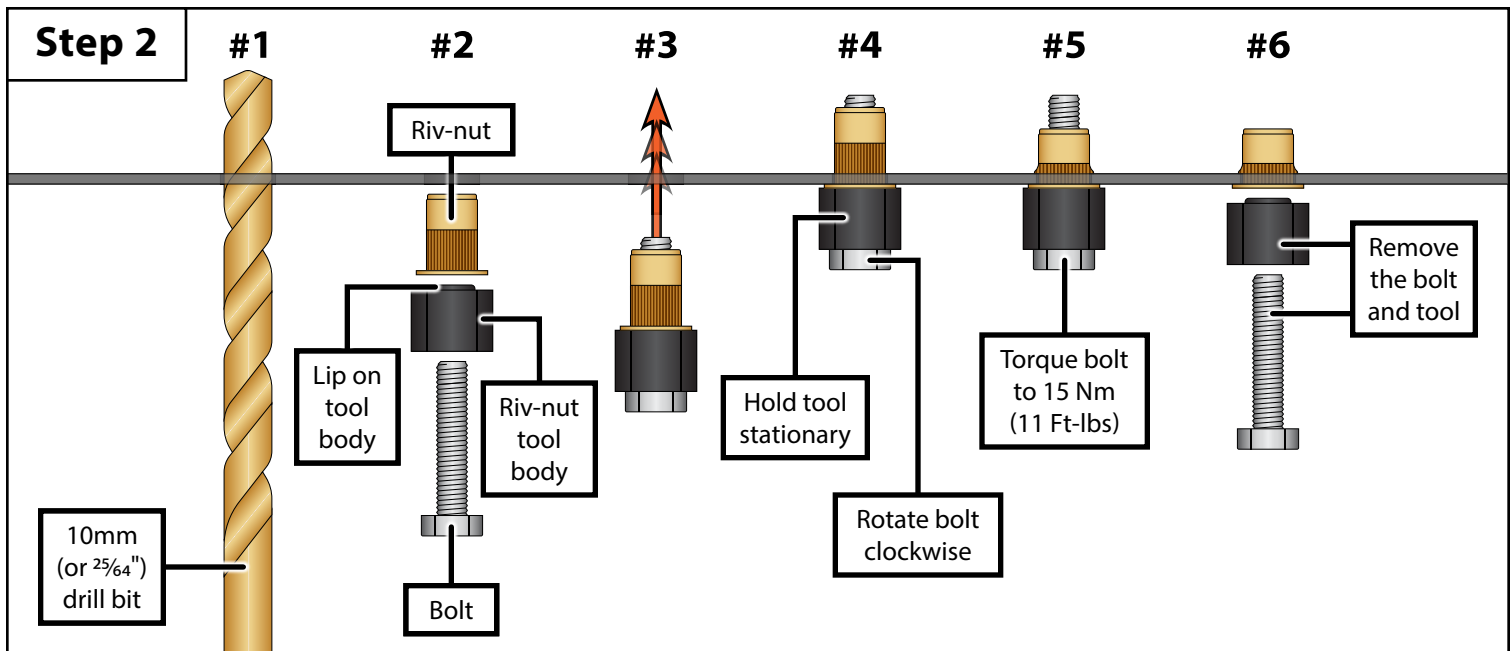
- Step 1**
- Safely lift and support the vehicle, remove the center insulation panel (not shown).
  - Locate the six hex holes in the subframe (circled in **YELLOW** in the **Step 1 photo** below).
  - Proceed to step 2 on the next page for detailed riv-nut installation instructions.








## Installing the New Skid Plate Kit

- Step 2**
- Drill out the hexagonal mounting holes using a 10mm (or  $\frac{25}{64}$ " ) drill bit (**#1 in Step 2 photo below**).
    - You can find a 10mm drill bit on our site by clicking [HERE](#).
    - Be sure to apply paint to the hole after drilling to prevent corrosion.
  - Align the lip on the riv-nut tool body with the flanged side of the riv-nut (**#2**).
  - Thread the bolt through the tool body and into the riv-nut by hand until it is fully seated (**#3**).
  - Insert the riv-nut into the mounting hole, making sure that it is fully seated (**#4**).
  - While holding the tool body stationary with a wrench, rotate the bolt clockwise to expand the riv-nut (**#5**).
  - Torque the bolt to 15 Nm (11 Ft-lbs), then remove the bolt and tool from the riv-nut (**#6**).
  - Repeat this procedure to install the remaining riv-nuts.
- Step 3**
- Install the skid plate support bracket with two of the M6x20mm bolts (arrows in the **Step 3 photo** below).



## Installing the New Skid Plate Kit

### Step 4

- Install the six M6 clip nuts into the factory plastic panels in the locations circled in **RED** below. 
- Lift the skid plate into position.
- Loosely install the three M6x16mm bolts through the front of the skid plate. 
- Loosely install the fourteen M6x20mm bolts through the remaining holes in the skid plate. 
  - We've included one spare M6x20mm bolt with the kit which will not be used.
- Adjust the skid plate as needed for proper fitment, then hand tighten all of the fasteners until snug.

### Step 4

↑ FRONT OF VEHICLE ↑

