



VW Tiguan MQB Street Shield Skid Plate Installation Instructions - [ES4158828](#)



Skill Level 1 - Easy

**Basic Skills
Required**



Proper service and repair procedures are vital to the safe, reliable operation of all motor vehicles as well as the personal safety of those performing the repairs. Standard safety procedures and precautions (including use of safety goggles and proper tools and equipment) should be followed at all times to eliminate the possibility of personal injury or improper service which could damage the vehicle or compromise its safety.

INSTALLATION NOTES

- **RH** refers to the *passenger side* of the vehicle.
- **LH** refers to the *driver side* of the vehicle.
- Always use the proper torque specifications.
- If applicable to this installation, torque specifications will be listed throughout the document and at the end as well.
- Please read all of these instructions and familiarize yourself with the complete process **BEFORE** you begin.

GENERAL PREPARATION AND SAFETY INFORMATION

ECS Tuning cares about your health and safety, please read the following safety information. This information pertains to automotive service in general, and while it may not pertain to every job you do, please remember and share these important safety tips.

- Park your car in a safe, well lit, level area.
- Shut the engine off and remove the key from the ignition switch.
- Make sure any remote start devices are properly disabled.
- **ALWAYS** wear safety glasses.
- Make sure the parking brake is applied until the vehicle is safely lifted and supported.
- Whether lifting a vehicle using an automotive lift or a hydraulic jack, be sure and utilize the factory specified lift points.
- Lifting a vehicle in an incorrect location can cause damage to the suspension/running gear.
- **ALWAYS** support the vehicle with jack stands.
- **ALWAYS** read and follow all safety information and warnings for the equipment you are using.



NEVER get underneath a vehicle that is supported only by a jack, and **ALWAYS** make sure that the vehicle is securely supported on jack stands.

INSTALLING THE NEW STREET SHIELD SKID PLATE

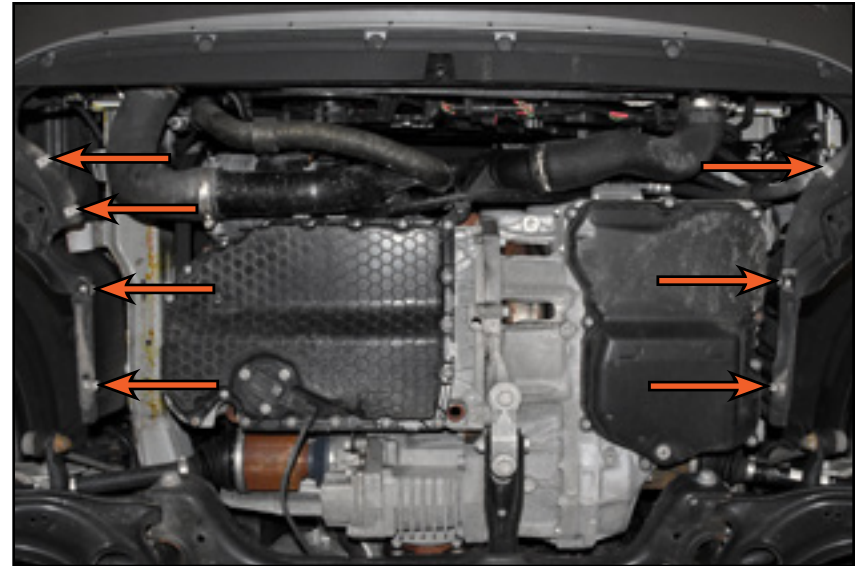
Step 1: T25 Torx

To remove the stock insulation panel, remove the eight screws around the perimeter (circled in **RED**), then pull the panel rearward to remove it.



Step 2:

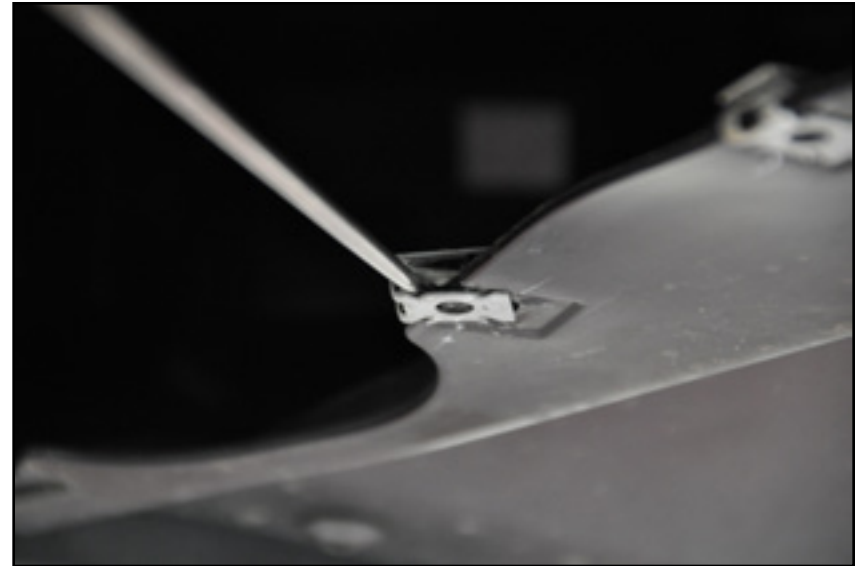
Locate the seven speed clips (arrows) and inspect them to ensure they are in place and in good condition. Replacements are provided in the hardware kit.



INSTALLING THE NEW STREET SHIELD SKID PLATE

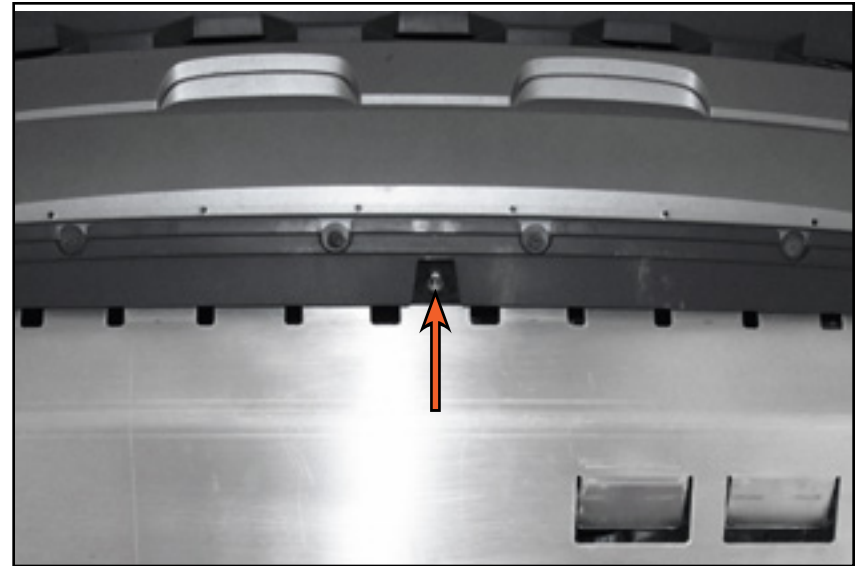
Step 3: Pick Tool

Optional: Pry each clip off using a pick tool or screwdriver and replace them with the new ones included in the kit.



Step 4: 4mm Hex (Allen)

Slide the new skid plate into place, making sure the tabs on the front edge alternate and fit into the lower core support as shown. Thread the provided 4mm hex (allen) mounting screw (arrow) into the front to keep the skid plate from sliding backwards.



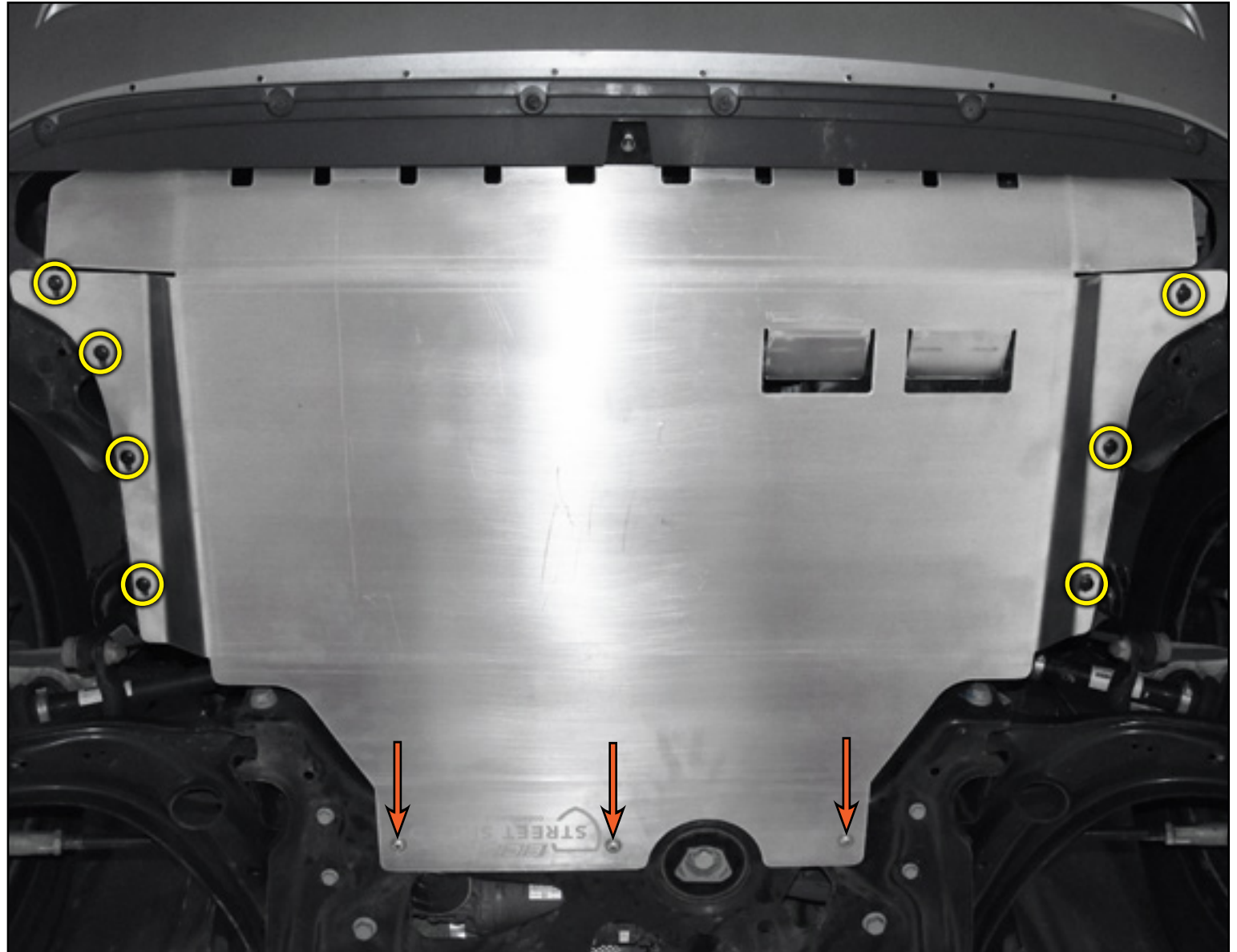
CAUTION: Be sure to support the rear of the skid plate during the next step, the full weight of the skid plate should **not** be supported by the plastic lower core support alone.

INSTALLING THE NEW STREET SHIELD SKID PLATE

Step 5:

Loosely install the three provided 5mm hex (allen) rear mounting bolts (arrows).

Install and tighten the seven remaining screws (circled in **YELLOW**), then go back and tighten the three bolts until snug.



Your Street Shield Skid Plate installation is complete!



These instructions are provided as a courtesy by ECS Tuning

Proper service and repair procedures are vital to the safe, reliable operation of all motor vehicles as well as the personal safety of those performing the repairs. Standard safety procedures and precautions (including use of safety goggles and proper tools and equipment) should be followed at all times to eliminate the possibility of personal injury or improper service which could damage the vehicle or compromise its safety.

Although this material has been prepared with the intent to provide reliable information, no warranty (express or implied) is made as to its accuracy or completeness. Neither is any liability assumed for loss or damage resulting from reliance on this material. SPECIFICALLY, NO WARRANTY OF MERCHANTABILITY, FITNESS FOR A PARTICULAR PURPOSE OR ANY OTHER WARRANTY IS MADE OR TO BE IMPLIED WITH RESPECT TO THIS MATERIAL. In no event will ECS Tuning, Incorporated or its affiliates be liable for any damages, direct or indirect, consequential or compensatory, arising out of the use of this material.