

Audi B8 Luft-Technik Intake Air Scoop Installation Instructions - **ES4315808**



**Thank you for purchasing our new ECS Tuning
Upgraded Intake Air Scoop, we appreciate your business!**



Features:

- Slotted mounting holes for easy installation.

Benefits:

- Wider, longer scoop serves as a better/larger guide for incoming air.
- Completely hidden installation.
- Perfectly compliments our ECS Intake Systems.



These installation instructions have been broken up into two sections:

1) Removing the Factory Intake Air Scoop

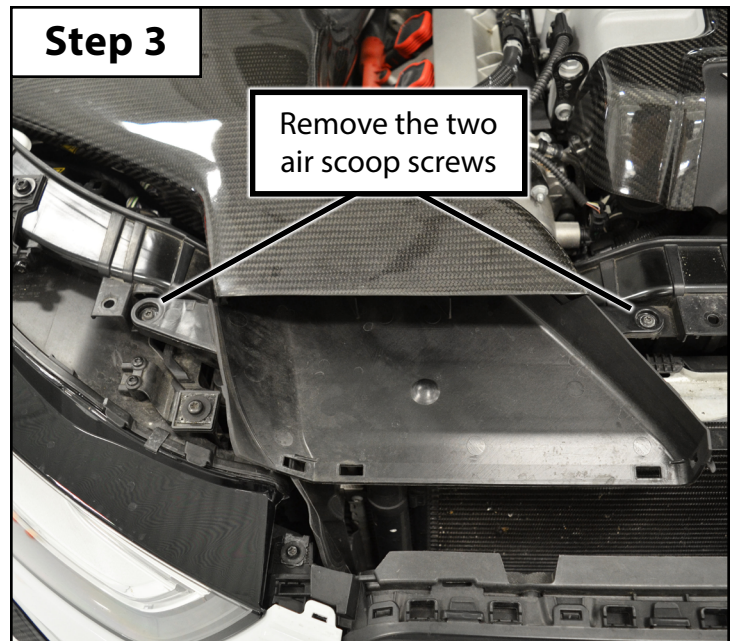
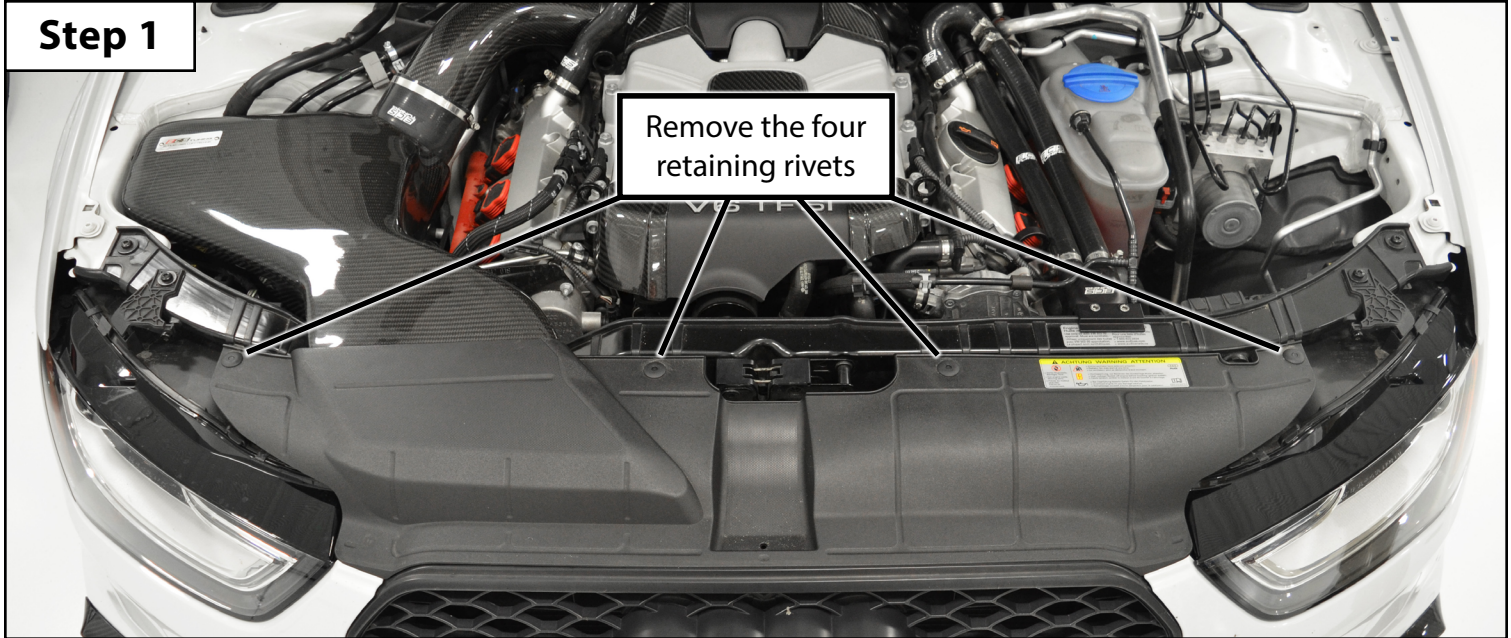
[\(Page 2\)](#)

2) Installing the Upgraded Intake Air Scoop

[\(Page 3\)](#)

Section 1: Removing the Factory Intake Air Scoop

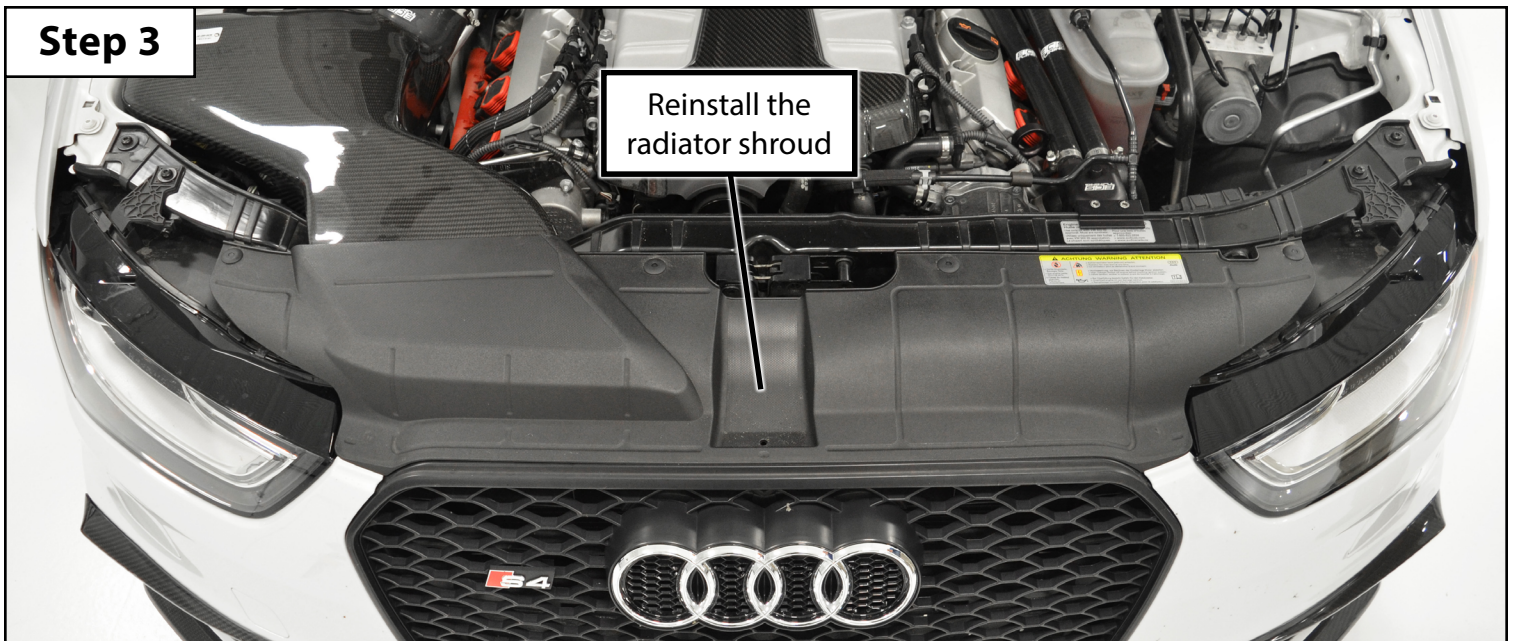
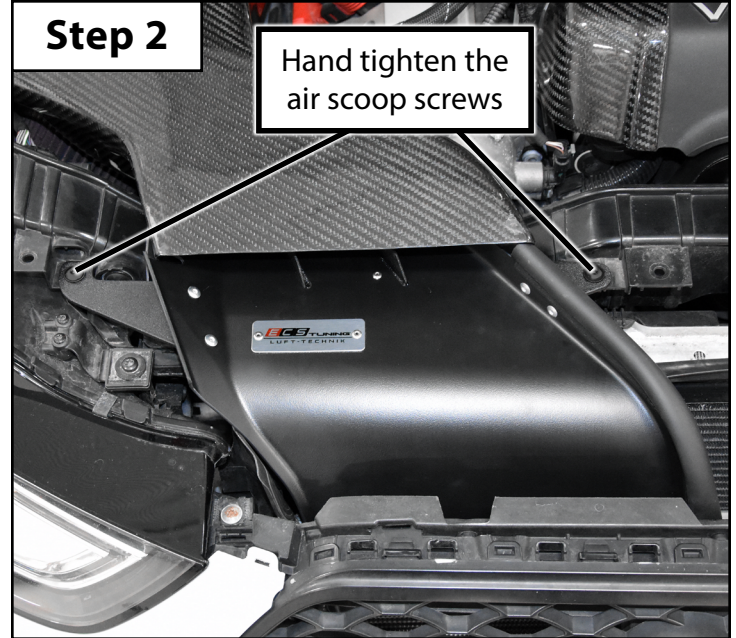
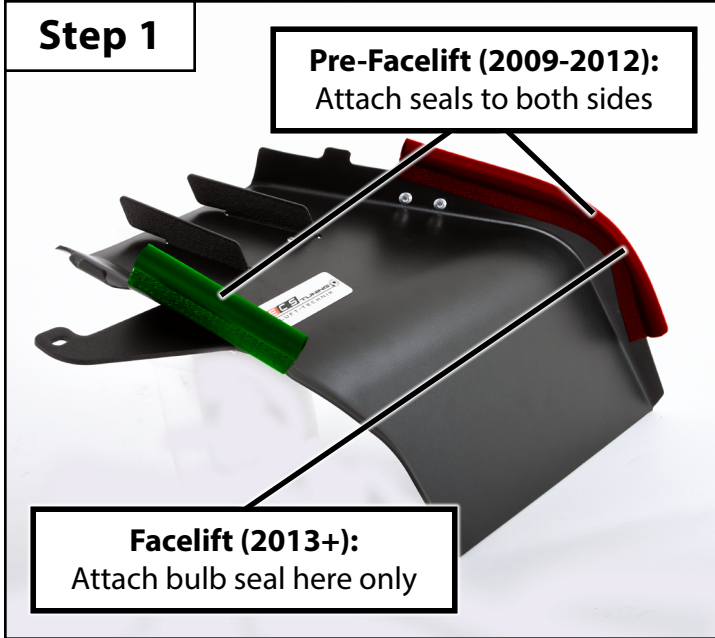
- Step 1**
- Locate the four radiator shroud retaining rivets (shown in the Step 1 photo below).
 - Push down lightly on the center pin of each rivet to release the tension, then remove them by pulling them up out of the radiator shroud.
- Step 2**
- Remove the radiator shroud by lifting up on the back edge slightly and pulling it rearward.
- Step 3**
- Remove the two T25 screws which secure the factory intake air scoop to the core support.
 - Pull the air scoop off of the core support and remove it from the vehicle.



You are now ready to install your new Upgraded Intake Air Scoop!

Section 2: Installing the Upgraded Intake Air Scoop

- Step 1**
- Attach the included bulb seal to the air scoop as follows:
 - Pre-Facelift (2009-2012):** Bulb seal must be applied to both sides of the air scoop (highlighted with **RED** and **YELLOW** in Step 1 photo below). Trim the bulb seal as needed.
 - Facelift (2013+):** Bulb seal must be applied to only the driver's side of the air scoop (highlighted with **RED** in Step 1 photo below). Trim the bulb seal as needed.
- Step 2**
- Install the new upgraded intake air scoop into place, then hand tighten the screws.
- Step 3**
- Reinstall the radiator shroud in the reverse order of removal.



Your installation is now complete!