



Audi B8 380mm RS5 Big Brake Kit Installation Instructions - [Click HERE to Shop](#)



Skill Level
2 - Moderate
Some Experience
Recommended



Proper service and repair procedures are vital to the safe, reliable operation of all motor vehicles as well as the personal safety of those performing the repairs. Standard safety procedures and precautions (including use of safety goggles and proper tools and equipment) should be followed at all times to eliminate the possibility of personal injury or improper service which could damage the vehicle or compromise its safety.

TABLE OF CONTENTS

Required Tools and Equipment.....	pg.3
Installation and Safety Information.....	pg.4
Installing the Big Brake Kit.....	pg.5
Bleeding the Brakes.....	pg.11
Torque Specifications.....	pg.12

AVAILABLE KITS



Stage 2 Kit w/o Calipers - [ES2793048](#)



Stage 4 Kit w/**RED** Calipers - [ES2739887](#)



Stage 4 Kit w/**BLACK** Calipers - [ES2785042](#)

REQUIRED TOOLS

Note: The tools required for each step will be listed by the step number throughout these instructions.

Standard Automotive Tools

- **Protecta-Sockets (for lug nuts)** [ES#2221243](#)
- **3/8" Drive Ratchet**..... [ES#2765902](#)
- **3/8" Drive Torque Wrench**..... [ES#2221245](#)
- **3/8" Drive Deep and Shallow Sockets** [ES#2763772](#)
- **3/8" Drive Extensions**..... [ES#2804822](#)
- **Hydraulic Floor Jack** [ES#2834951](#)
- **Torx Drivers and Sockets** [ES#11417/8](#)
- **1/2" Drive Deep and Shallow Sockets** [ES#2839106](#)
- **1/2" Drive Ratchet**
- **1/2" Drive Extensions**
- **1/2" Drive Torque Wrench**..... [ES#2221244](#)
- **1/2" Drive Breaker Bar** [ES#2776653](#)
- **1/2" Pneumatic Impact**
- Crows Foot Wrenches
- Hook and Pick Tool Set [ES#2778980](#)

Required For This Install

- **1/4" Drive Ratchet** [ES#2823235](#)
- **1/4" Drive Deep and Shallow Sockets**..... [ES#2823235](#)
- **1/4" Drive Extensions** [ES#2823235](#)
- **Plier and Cutter Set**..... [ES#2804496](#)
- **Flat and Phillips Screwdrivers** [ES#2225921](#)
- **Jack Stands** [ES#2763355](#)
- **Ball Pein Hammers**
- **Pry Bar Set**..... [ES#1899378](#)
- **Line Wrenches**..... [ES#2840737](#)
- **Bench Mounted Vise**
- **Drill Bits**
- **Punch and Chisel Set**
- **Hex Bit (Allen) Wrenches and Sockets**..... [ES#11420](#)
- **Thread Repair Tools**..... [ES#1306824](#)
- **Open/Boxed End Wrench Set**..... [ES#2765907](#)

Available On Our Website

INSTALLATION NOTES

- **RH** refers to the *passenger side* of the vehicle.
- **LH** refers to the *driver side* of the vehicle.
- Always use the proper torque specifications.
- If applicable to this installation, torque specifications will be listed throughout the document and at the end as well.
- Please read all of these instructions and familiarize yourself with the complete process **BEFORE** you begin.

GENERAL PREPARATION AND SAFETY INFORMATION

ECS Tuning cares about your health and safety, please read the following safety information. This information pertains to automotive service in general, and while it may not pertain to every job you do, please remember and share these important safety tips.

- Park your car in a safe, well lit, level area.
- Shut the engine off and remove the key from the ignition switch.
- Make sure any remote start devices are properly disabled.
- **ALWAYS** wear safety glasses.
- Make sure the parking brake is applied until the vehicle is safely lifted and supported.
- Whether lifting a vehicle using an automotive lift or a hydraulic jack, be sure and utilize the factory specified lift points.
- Lifting a vehicle in an incorrect location can cause damage to the suspension/running gear.
- **ALWAYS** support the vehicle with jack stands.
- **ALWAYS** read and follow all safety information and warnings for the equipment you are using.



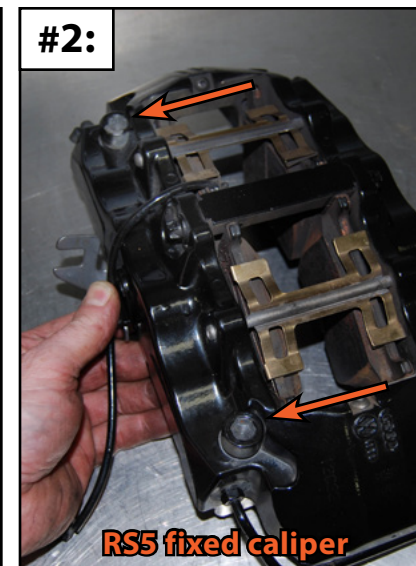
NEVER get underneath a vehicle that is supported only by a jack, and **ALWAYS** make sure that the vehicle is securely supported on jack stands.

INSTALLING THE BIG BRAKE KIT

Step 1:

Remove the front brake calipers and brackets from the vehicle.

- **With stock floating calipers:**
 - Disconnect each front brake hose where it meets the line.
 - Use a 21mm socket to remove the caliper bracket bolts and remove both calipers and hoses.
- **With existing RS5 fixed calipers:**
 - Remove the front brake hoses from the car.
 - Use an 8mm allen socket to remove the caliper bolts (arrows), and remove the calipers.
 - Use a 21mm socket to remove the original RS5 caliper brackets.



Step 2: T30 Torx

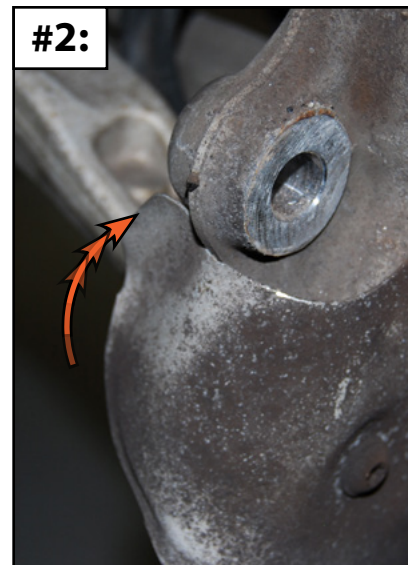
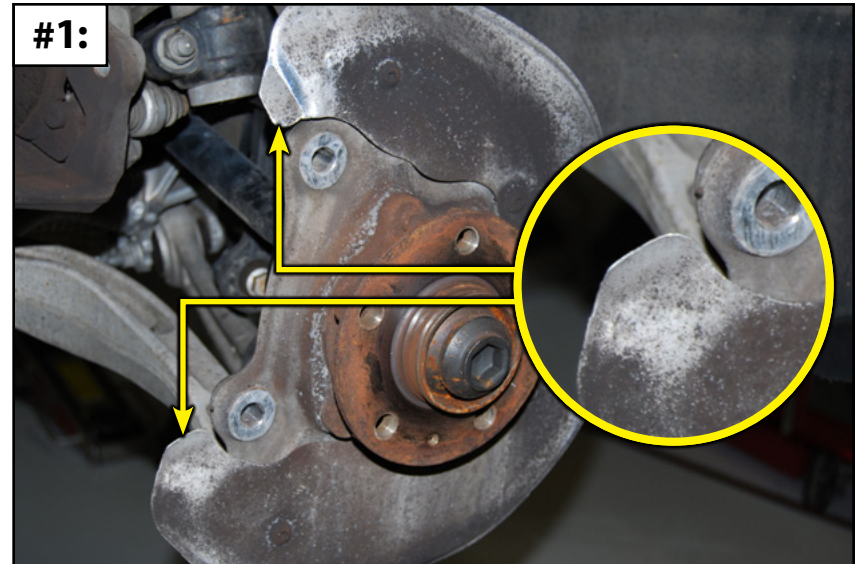
Remove the rotor screws (arrow), then remove the brake rotors.



INSTALLING THE BIG BRAKE KIT

Step 3:

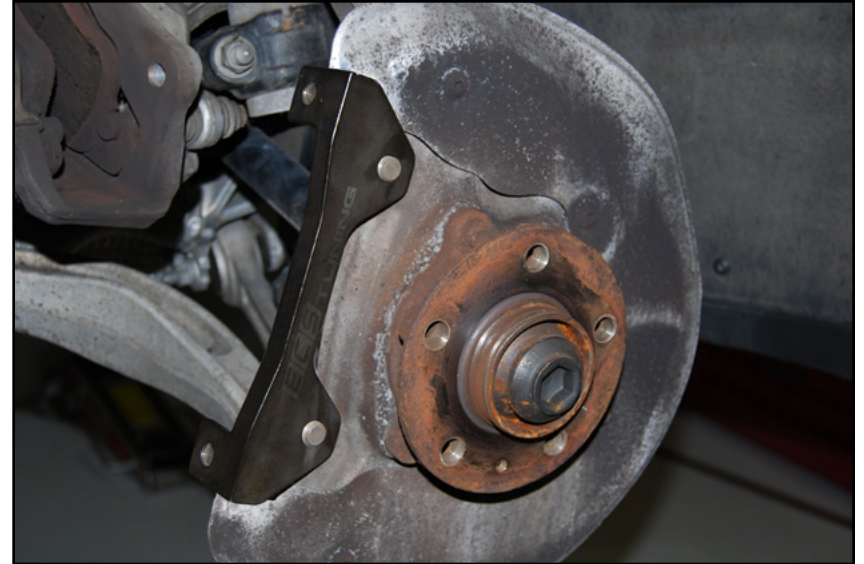
For A4/5 and S4/5 models, the ears of each front brake shield will need to be bent slightly in order to clear the new caliper brackets (arrows in **Photo #1**). Bend both of the shield ears slightly inward (as shown in **Photo #2 & Photo #3**).



INSTALLING THE BIG BRAKE KIT

Step 4:

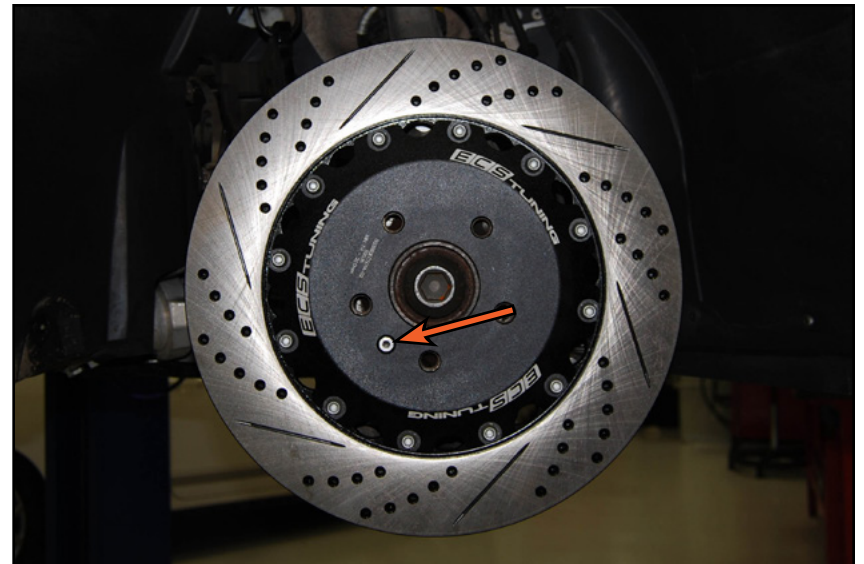
Install the new caliper brackets using the supplied bolts and torque them to 196 Nm (145 Ft-lbs).



Step 5:

Install the 380mm rotors and torque the rotor screws (arrow) to 5 Nm (3.7 Ft-lbs).

Be sure to thoroughly clean the surface of the rotors with brake cleaner.



INSTALLING THE BIG BRAKE KIT

Step 6:

Remove the front brake calipers and brackets from the vehicle.

- **With existing RS5 fixed calipers:**

- Remove the original brake pads then proceed with this step.

Sparingly apply brake lubricant to all of the brake pad contact points (it is only necessary to apply a thin layer). The highlighted areas on the brake pad shown in the picture indicate where to apply the lubricant. If in question, hold a pad in place in the caliper to identify the contact points.



If your vehicle already has RS5 calipers we strongly recommend using the new pads that come with the kit. If you choose to use your old pads and save the new ones for future use, it is a good idea to remove the pads, clean the caliper, and lubricate the contact points as shown.



Step 7:

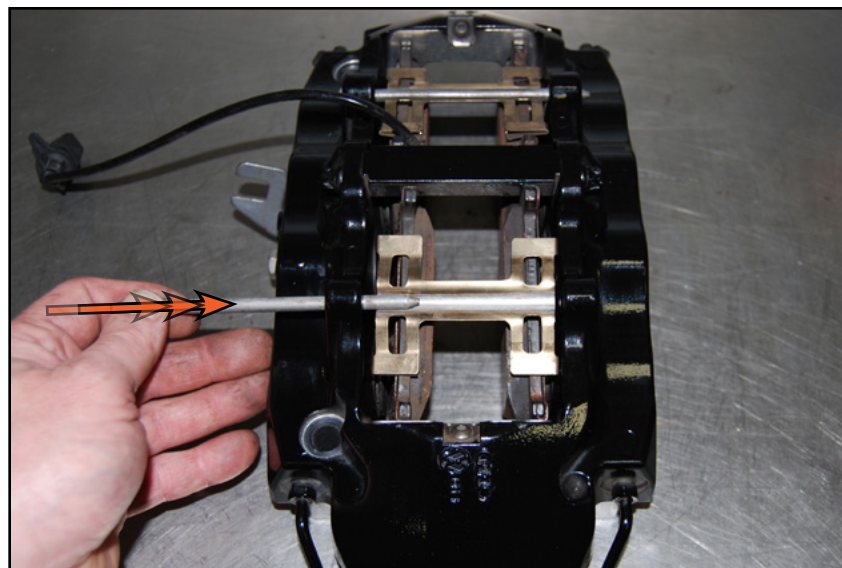
Insert the brake pads into place in the calipers.



INSTALLING THE BIG BRAKE KIT

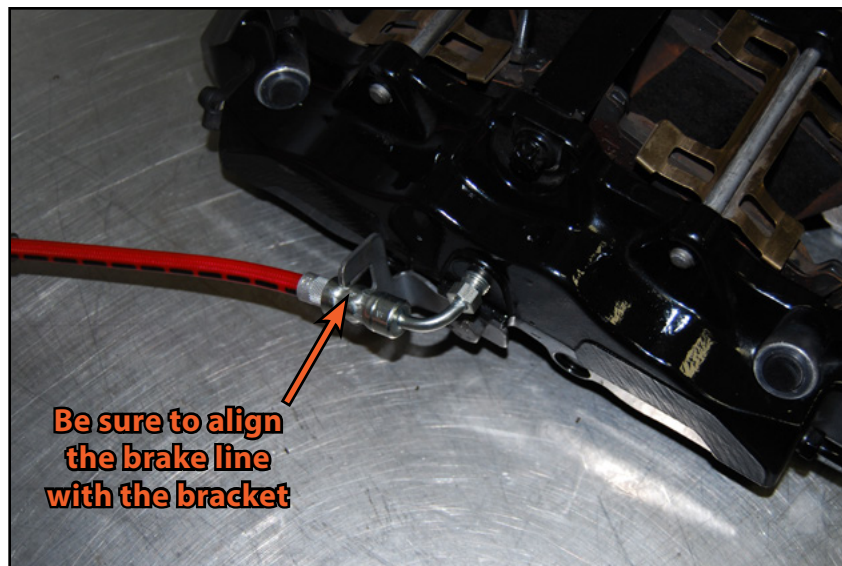
Step 8:

Install the new caliper pad springs and pins.



Step 9:

Install a new brake hose into each caliper, being sure to align the hose with the bracket as shown in the photo. Thread the hose fitting into the caliper by hand, then tighten it until it is snug.

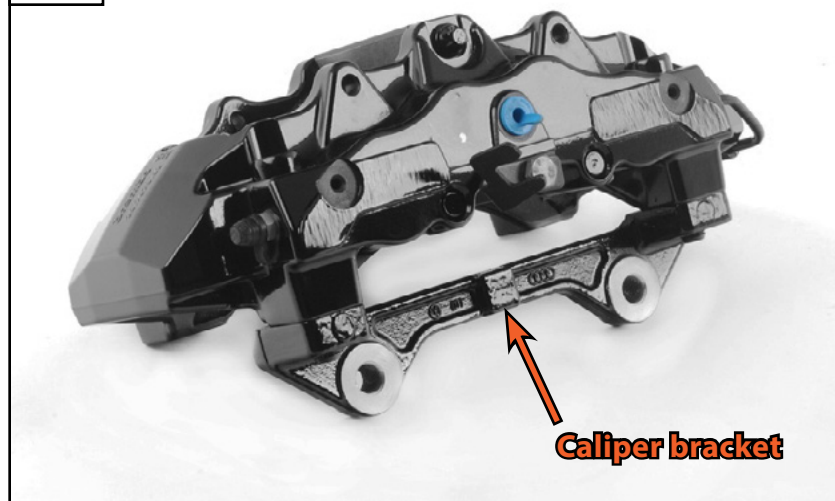


INSTALLING THE BIG BRAKE KIT

Step 10:

- For kits **WITH** new RS5 fixed calipers only:
 - The original painted caliper bracket (**Photo #1**) must be removed prior to installation (these are the stock RS5 brackets, and they will not fit with the 380mm rotors).
 - Remove them using an 8mm allen socket, we will be reusing these bolts to install the caliper onto your vehicle.
- For **ALL** kits:
 - Install the RS5 calipers by holding them in place, sliding the bolts through the calipers and threading them into the bracket by hand (**Photo #2**).
 - Torque the bolts to 115 Nm (85 Ft-lbs).
 - Connect the new brake hoses to the brake lines on the chassis (**Photo #3**), then tighten them to snug with a line wrench.

#1:



#2:



#3:



BLEEDING THE BRAKES

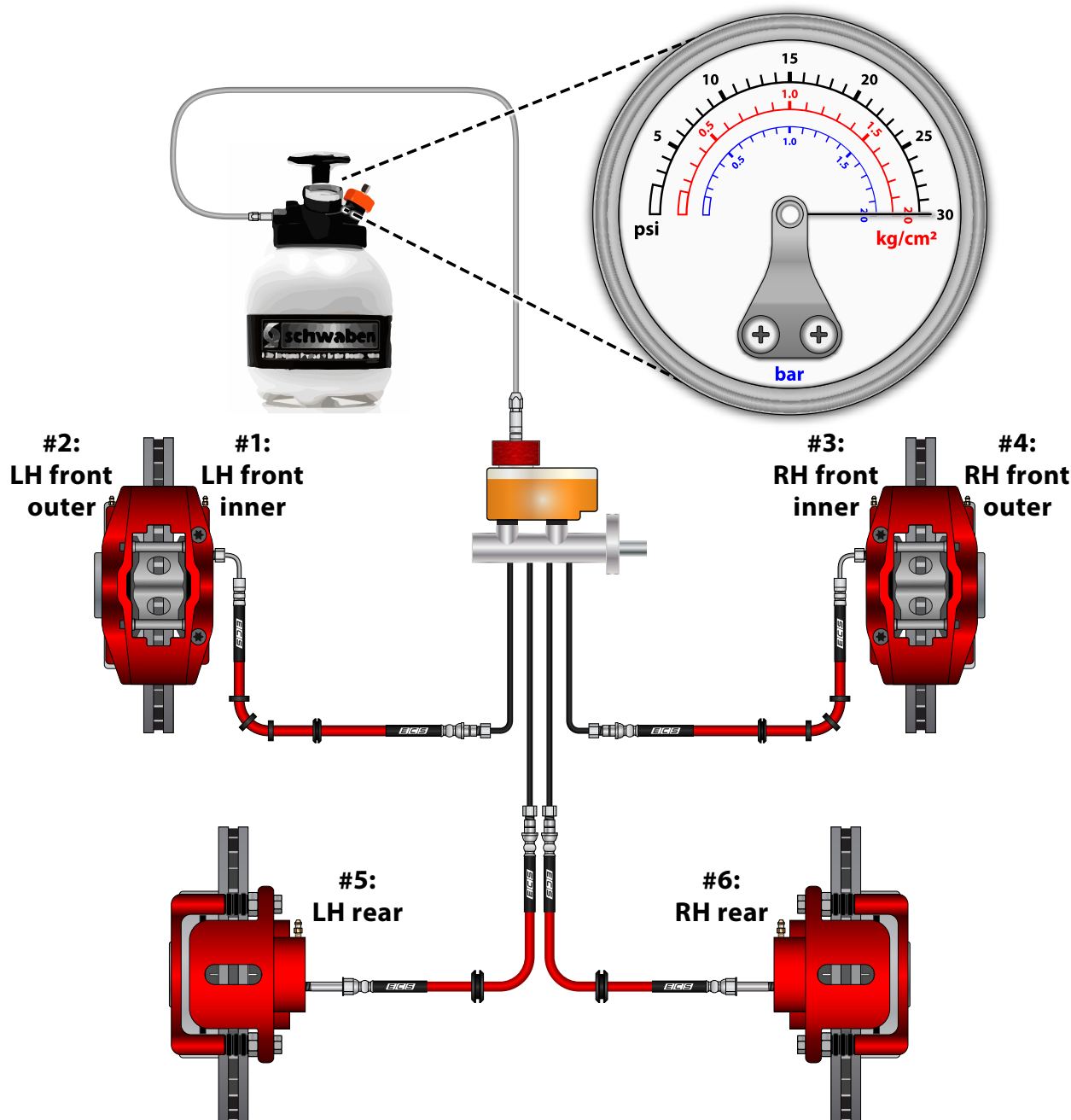
Step 1:

Whenever the brake lines are serviced you will need to bleed the air from the system. We strongly suggest the use of our 3-Liter Premium European Brake Bleeder ([ES3125779](#)) for this job because it features a professional grade aluminum master cylinder cap adapter which can handle the higher pressure. We've found that we sometimes need to apply as much as 30 psi in order to remove the air from the rear lines.

Open the bleeder screws in the order shown in the graphic on the right while bleeding the system.

If your brake pedal feels softer than expected after bleeding the brakes, repeat the process again. Air can become trapped inside fixed brake calipers such as these due to their complex design and the transfer pipe at the bottom.

Install the wheels and torque them to 120 Nm (89 Ft-lbs). Recheck all fasteners after the vehicle has been driven for 500 miles.



TORQUE SPECIFICATIONS

Many bolts will have a torque specification listed in the format - xx Nm (xx Ft-lbs) + xx degrees. These bolts are torque to yield bolts, commonly referred to as “stretch” bolts. The correct procedure for torquing these bolts is:

Stage One - Torque the bolt(s) to the initial Nm or Ft-lb specification. If there is more than one, be sure to torque them in the correct sequence.

Stage Two - Tighten or “stretch” the bolt(s) the additional specified number of degrees. If there is more than one, be sure to follow the correct sequence.

All Torque to Yield bolts should only be used once and should be replaced each time they are removed. If they are reused, they will not be able to achieve the proper clamping force with the specified torque.

Torque specifications are always listed for a dry fastener (no lubrication) unless specified otherwise.

Brake caliper to bracket	115 Nm (85 Ft-lbs)	(Page 10)
Brake rotor screw	5 Nm (3.7 Ft-lbs)	(Page 7)
Caliper bracket to steering knuckle	196 Nm (145 Ft-lbs)	(Page 7)
Wheel bolts	120 Nm (89 Ft-lbs)	(Page 11)

PAD BREAK-IN AND MAINTENANCE

Be sure to read the pad break in procedure included with the pads in the kit. Performing this procedure as specified will guarantee the correct performance and wear from your brake pads.

To ensure even wear, consistent performance, and long life of your brake pads, it is a good idea to remove the pads once a year and clean any rust, dirt, or debris from the brake pad and caliper. Re-lubricate the contact points as shown on Page 8, step 6.

Your Big Brake Kit installation is complete!



These instructions are provided as a courtesy by ECS Tuning

Proper service and repair procedures are vital to the safe, reliable operation of all motor vehicles as well as the personal safety of those performing the repairs. Standard safety procedures and precautions (including use of safety goggles and proper tools and equipment) should be followed at all times to eliminate the possibility of personal injury or improper service which could damage the vehicle or compromise its safety.

Although this material has been prepared with the intent to provide reliable information, no warranty (express or implied) is made as to its accuracy or completeness. Neither is any liability assumed for loss or damage resulting from reliance on this material. SPECIFICALLY, NO WARRANTY OF MERCHANTABILITY, FITNESS FOR A PARTICULAR PURPOSE OR ANY OTHER WARRANTY IS MADE OR TO BE IMPLIED WITH RESPECT TO THIS MATERIAL. In no event will ECS Tuning, Incorporated or its affiliates be liable for any damages, direct or indirect, consequential or compensatory, arising out of the use of this material.