



## Do-It-Yourself



## 2001-2005 Porsche 996 Turbo Fuel Filter Replacement

This tutorial is provided as a courtesy by ECS Tuning.

Proper service and repair procedures are vital to the safe, reliable operation of all motor vehicles as well as the personal safety of those performing the repairs. Standard safety procedures and precautions (including use of safety goggles and proper tools and equipment) should be followed at all times to eliminate the possibility of personal injury or improper service which could damage the vehicle or compromise its safety.

Although this material has been prepared with the intent to provide reliable information, no warranty (express or implied) is made as to its accuracy or completeness. Neither is any liability assumed for loss or damage resulting from reliance on this material. SPECIFICALLY, NO WARRANTY OF MERCHANTABILITY, FITNESS FOR A PARTICULAR PURPOSE OR ANY OTHER WARRANTY IS MADE OR TO BE IMPLIED WITH RESPECT TO THIS MATERIAL. In no event will ECS Tuning, Incorporated or its affiliates be liable for any damages, direct or indirect, consequential or compensatory, arising out of the use of this material.

## Porsche 996 Turbo (2001-2005) Fuel Filter Replacement



artwork and images © ECS Tuning

### A Tight Fit

The fuel filter in Porsche 996 Turbo GT2 and GT3 cars should be replaced at the 60,000 mile major maintenance, although more frequent fuel filter replacement is a prudent option, especially in areas where fuel quality is poor or inconsistent.

Clogged fuel filters cause fuel starvation, especially noticeable when the engine is cold or under load. A scan of the onboard diagnostic system may indicate a large, positive shift in fuel trim to compensate for reduced fuel volume.

The fuel filter is wedged in the upper left corner of the engine compartment, near the coolant recovery bottle. It's a tight fit, but once you know a few tricks it is not extremely difficult to replace.

**Caution:** You will spill some fuel when replacing the filter. Have rags ready to sop up the fuel that dribbles from the fuel line. (Hide the ignition keys during this procedure so no one can turn the ignition on or crank the engine, energizing the fuel pump.)

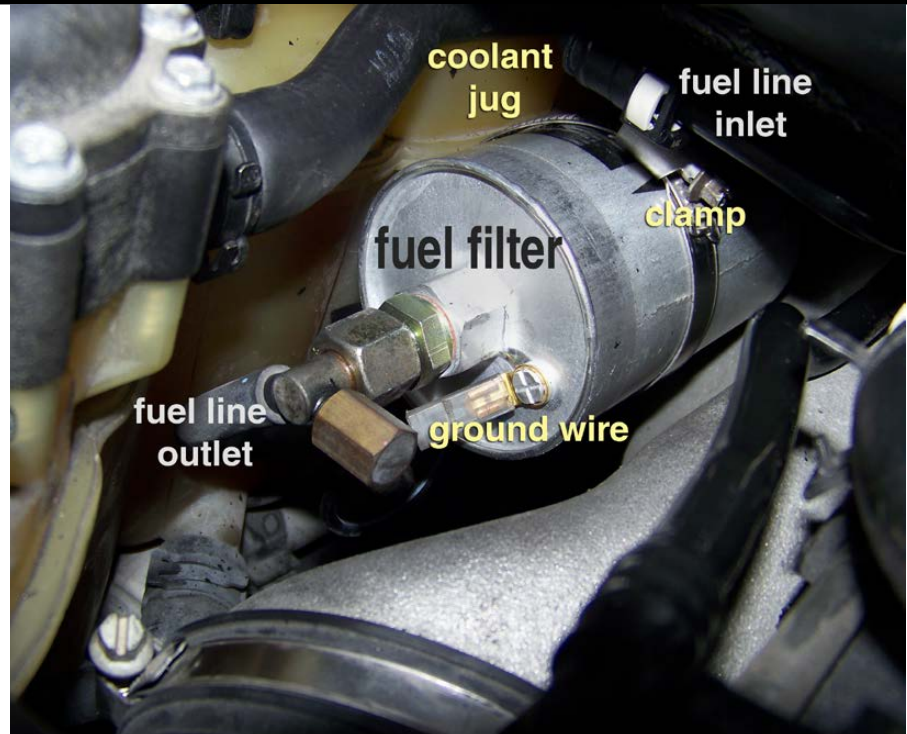
Always work away from any ignition source; spark or open flame. Wear protective glasses and clothing. If you have any doubts about safety or your ability to perform this procedure, please seek the assistance of an auto repair professional.

## Porsche 996 Turbo (2001-2005) Fuel Filter Replacement

The fuel filter is located on the left side of the engine compartment, next to the coolant recovery bottle.

If you haven't replaced one yet, you'll be tempted to start unscrewing the metal clamp.

There's an easier way.



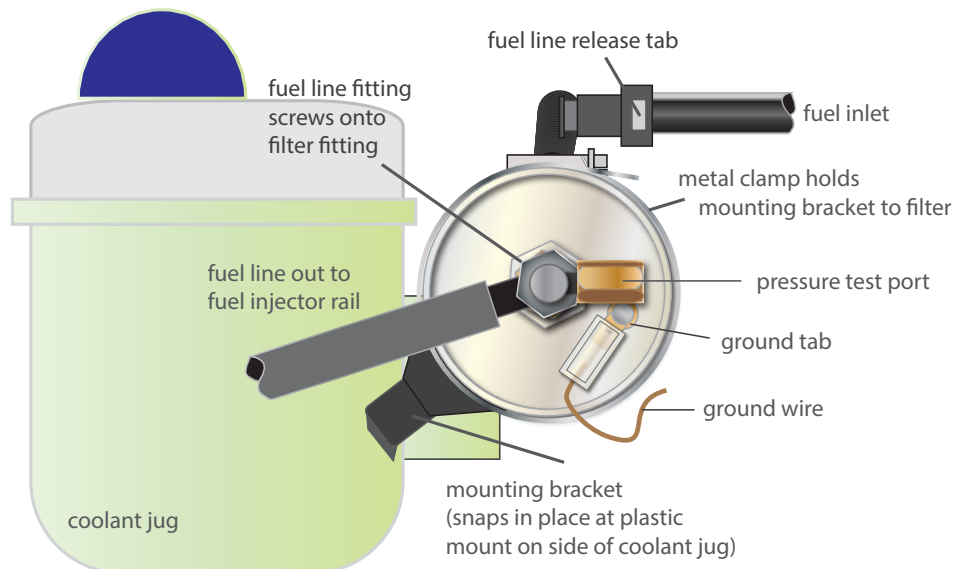
*artwork and images © ECS Tuning*

### Overview - Component Locations

The fuel filter is secured to a black plastic mounting bracket by a large stainless steel clamp.

The black plastic bracket snaps into a mating plastic mount built into the body of the coolant jug.

Our image calls out main components for identification.



## Removing the Old Filter

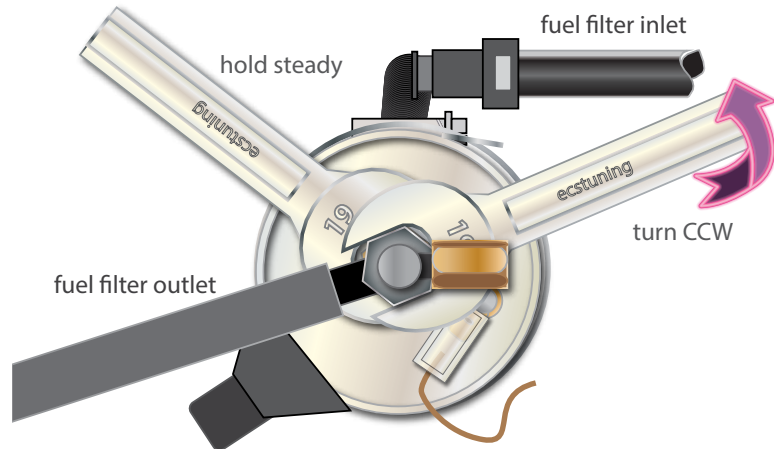
Before removing the filter, disconnect the fuel lines.

*Note: Crack the fuel cap at the fuel tank fill neck to relieve any vapor pressure inside the tank, and have rags ready to catch any fuel that dribbles from the lines as you disconnect them. Use a small rubber cap to seal the disconnected supply hose.*

### Outlet

Using two 19mm open end wrenches, disconnect the **outlet** fuel line.

Hold the steel fitting in the filter steady with one 19 mm wrench as you crack the fuel line. Collect the fuel that dribbles from the line in rags.



artwork and images © ECS Tuning

## Remove the Fuel Lines

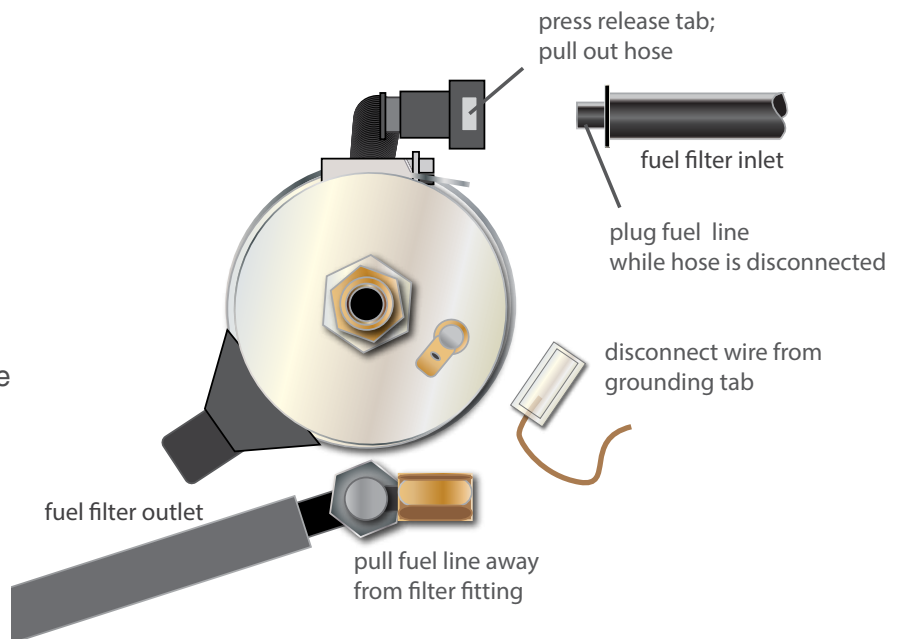
### Outlet

Unscrew the loosened fuel outlet and remove it completely.

### Inlet

Press the plastic lock tab on the quick coupler, then disconnect fuel inlet line.

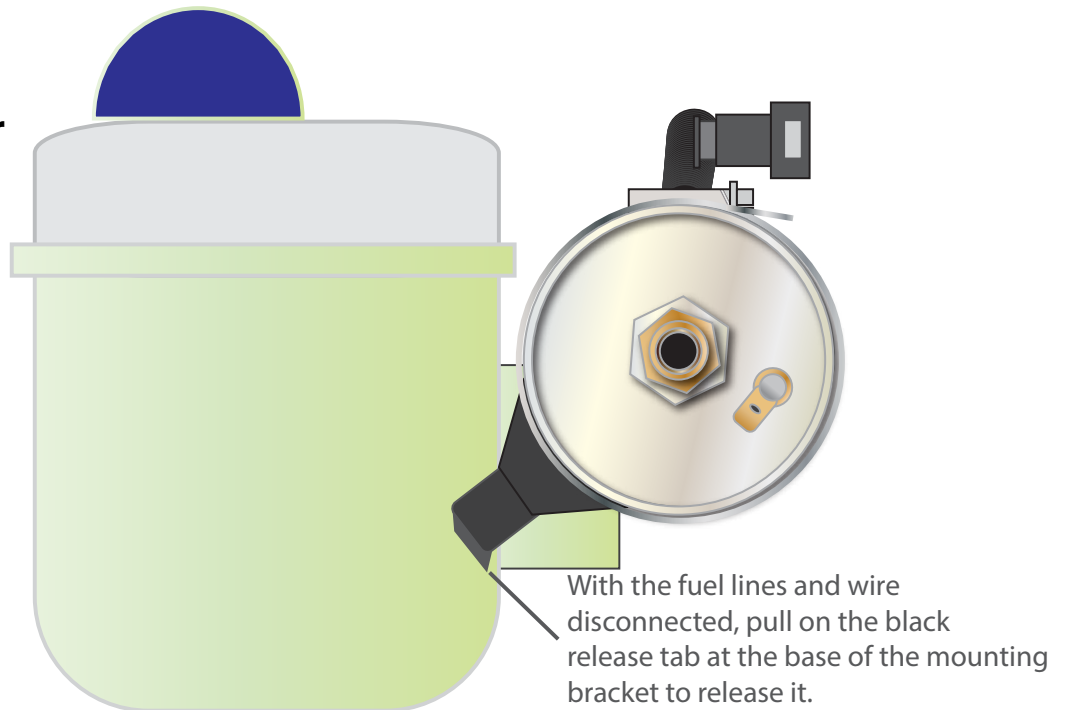
Disconnect the wire connector from the grounding tab on the filter body.



## Porsche 996 Turbo (2001-2005) Fuel Filter Replacement

### Remove the Filter

Pull on the filter bracket tab to release it.

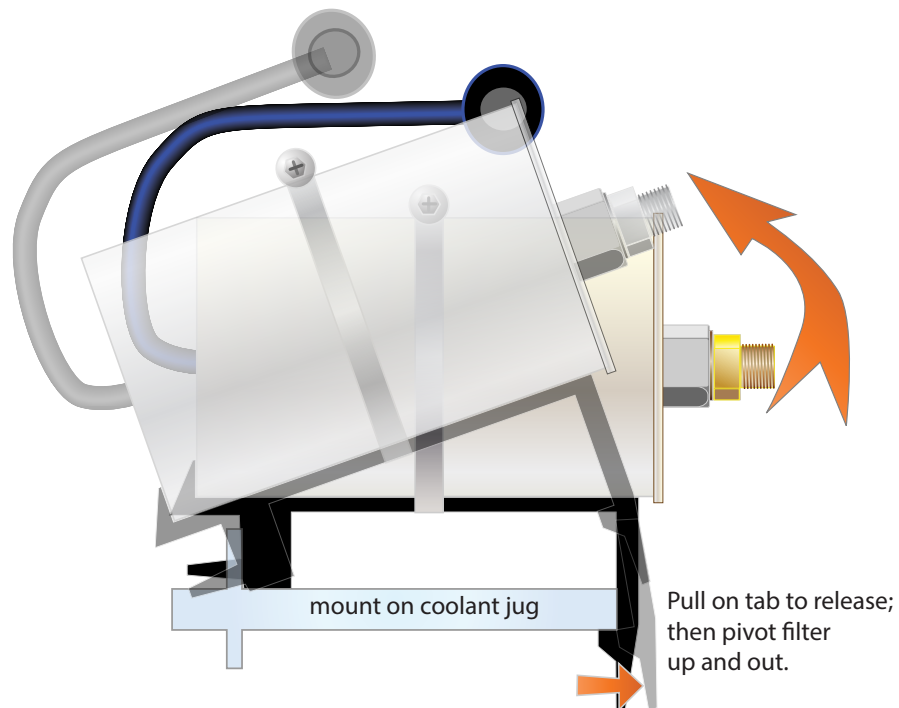


*artwork and images © ECS Tuning*

This side view shows how to pull the release tab and lift to pull the old filter from its bracket.

Pull the filter out of the car.

(It's a tight fit. Expect to do some wiggling and twisting to remove the filter.)



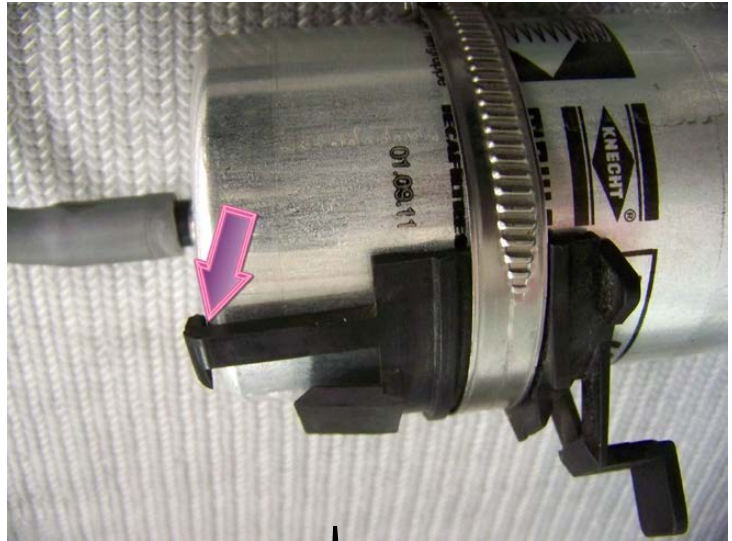


## Porsche 996 Turbo (2001-2005) Fuel Filter Replacement

### Transfer Mounting Bracket

Loosen the clamp securing the bracket to the old filter. Transfer the clamp and black mounting bracket to the new filter.

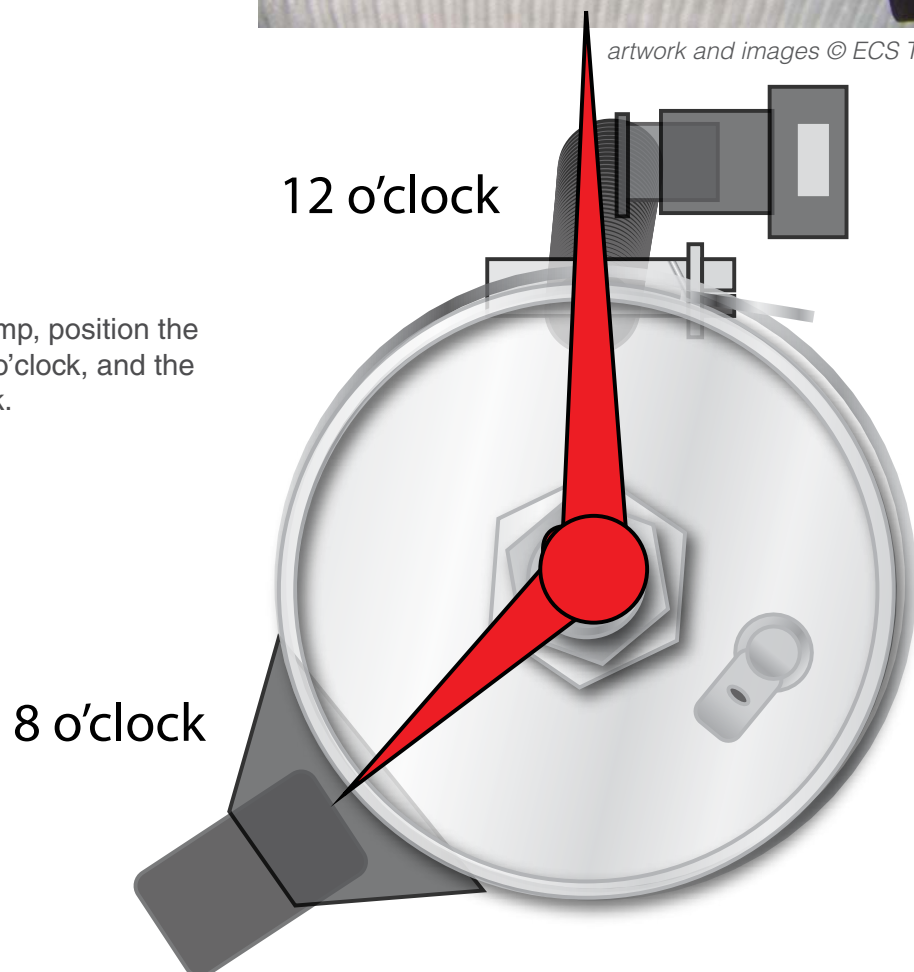
Slide the filter all the way in until it contacts the stop (arrow).



artwork and images © ECS Tuning

Before tightening the clamp, position the filter so the inlet is at 12 o'clock, and the bracket tab is at 8 o'clock.

Then tighten the clamp.

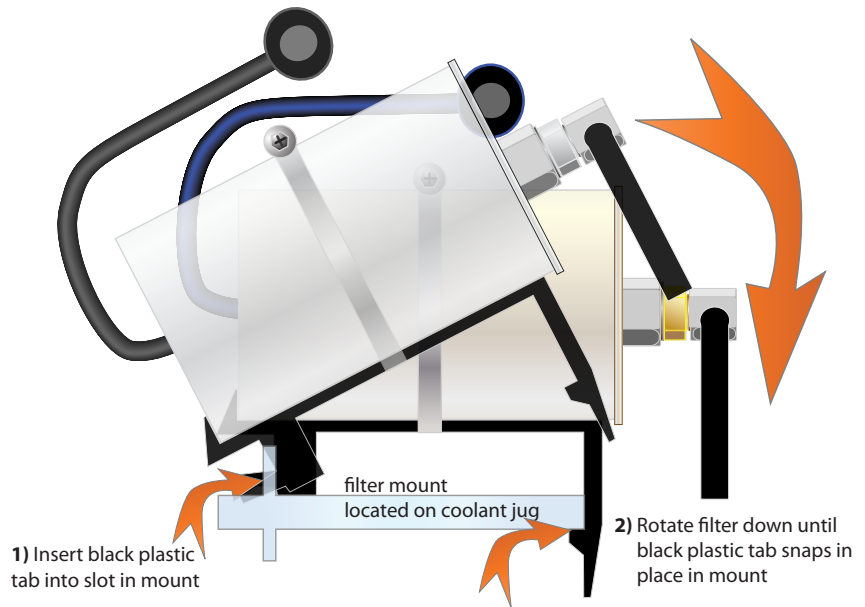


## Porsche 996 Turbo (2001-2005) Fuel Filter Replacement

### Reinstall the Filter

Slide the filter back in place next to the coolant jug (again, some patient wiggling is required).

Insert the black plastic tab in the mounting bracket slot. Then tip the front of the filter downward until the locking tab snaps in place.

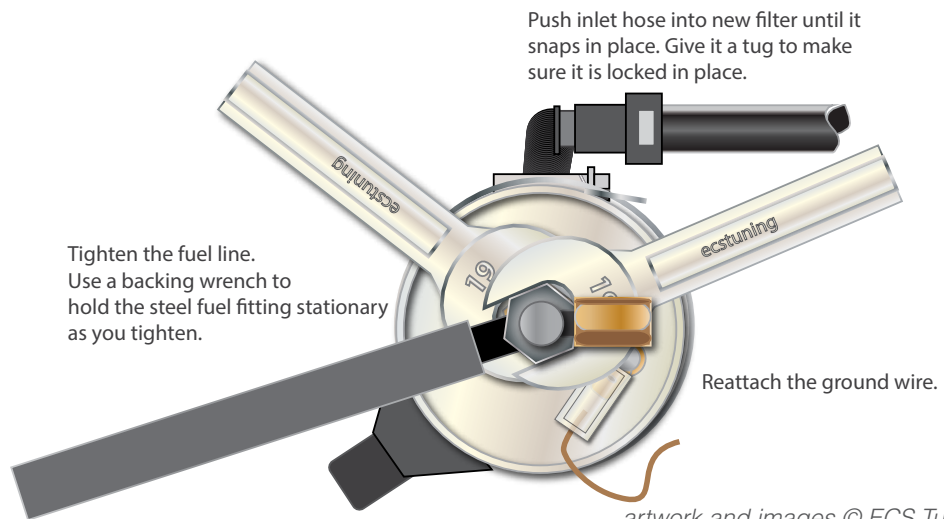


### Final Steps

1) Reconnect the fuel inlet. Make sure the fuel line snaps securely in place and cannot be pulled apart by hand.

2) Attach the fuel outlet. Hand tighten the fuel line.

3) Reattach the ground wire to the filter body.



artwork and images © ECS Tuning

**Note 1:** Have someone crank the engine over as you watch the fuel line connections for leaks. Stop immediately if a leak is detected and correct the cause.

**Note 2:** Expect the engine to crank longer than usual initially, start, and then stall several times until the filter is completely filled with fuel, and all air is purged from the fuel system.

**Note 3:** Don't forget to tighten the gas cap.

This completes our fuel filter replacement tutorial.