



Ziza® Interior Lighting Package Installation Procedures



Part Number **ES2581992**
for Porsche 997 Turbo

This tutorial is provided as a courtesy by ECS Tuning.

Proper service and repair procedures are vital to the safe, reliable operation of all motor vehicles as well as the personal safety of those performing the repairs. Standard safety procedures and precautions (including use of safety goggles and proper tools and equipment) should be followed at all times to eliminate the possibility of personal injury or improper service which could damage the vehicle or compromise its safety.

Although this material has been prepared with the intent to provide reliable information, no warranty (express or implied) is made as to its accuracy or completeness. Neither is any liability assumed for loss or damage resulting from reliance on this material. SPECIFICALLY, NO WARRANTY OF MERCHANTABILITY, FITNESS FOR A PARTICULAR PURPOSE OR ANY OTHER WARRANTY IS MADE OR TO BE IMPLIED WITH RESPECT TO THIS MATERIAL. In no event will ECS Tuning, Incorporated or its affiliates be liable for any damages, direct or indirect, consequential or compensatory, arising out of the use of this material.

Ziza Interior Lighting Package Installation ES2581992



Porsche 997 Turbo

LED Installation Instructions

Interior Lighting Kit for Porsche 997
ES2581992



Ziza
performance automotive lighting

Tools

Trim removal tool – ES517779 (Kit)

Kit Contents

5-chip wedge base white LED (qty 7)
42mm white LED festoon (qty 3)

This tutorial explains how to access and replace bulbs with the LEDs in your Ziza kit.



Prevent damage to interior panels, the headliner, and trim.
Use a plastic, non-marring trim removal tool.
Two complete kits are available.

Make the job easier and prevent damage to headliners
and other interior trim with **ECS Tuning Trim and Molding
Removal Tool Sets: [ES2500877](#) and [ES517779](#).**

What are LEDs?

LEDs are Light Emitting Diodes, solid state devices that emit light when connected to electrical current. They have no moving parts or wire filaments to burn out. They emit a whiter light, run cooler, and last longer than the incandescent (filament style bulbs) we are replacing in this tutorial.

Unlike filament bulbs, LEDs are polarity sensitive. They have plus and minus (positive and negative) electrical terminals that must match the polarity of the applied voltage. Installing the bulbs “backwards” in the light bulb sockets (with reversed polarity) will not harm them, but they will not light. Flipping the bulb 180 degrees in the electrical connector cures this problem.

Bulb Types

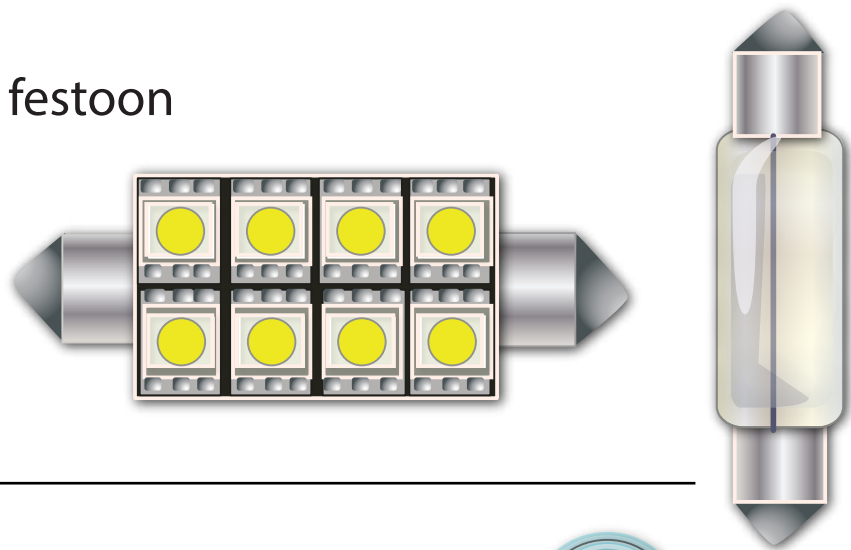
This kit includes two bulb types, classified by their general shape.

FESTOON - Conventional incandescent **festoon** bulbs have a shape and general appearance that is similar to a glass fuse.

Metal caps attached to both ends of a glass tube are sealed to the tube and attached to the bulb filament. End caps mount the bulb in its holder and also conduct electrical current.

LED festoon lights have the same pointed end caps, but are attached to a bank of LEDs instead of a filament tube.

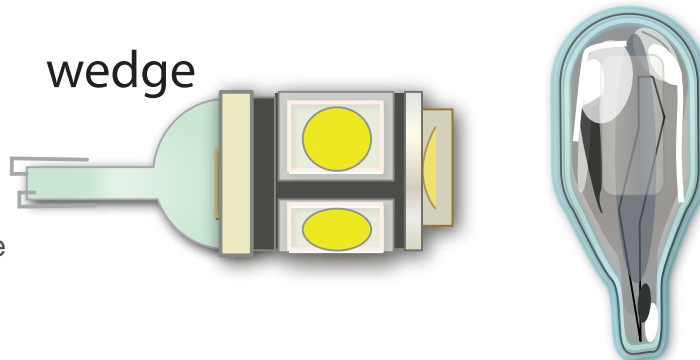
festoon



WEDGE - Wedge style bulbs get their name from the shape of the bulb base. The tapered end of the bulb “wedges” into the bulb socket.

LED wedge lights fit the bulb socket like a filament bulb, but are polarity sensitive.

wedge



Ziza Interior Lighting Package Installation

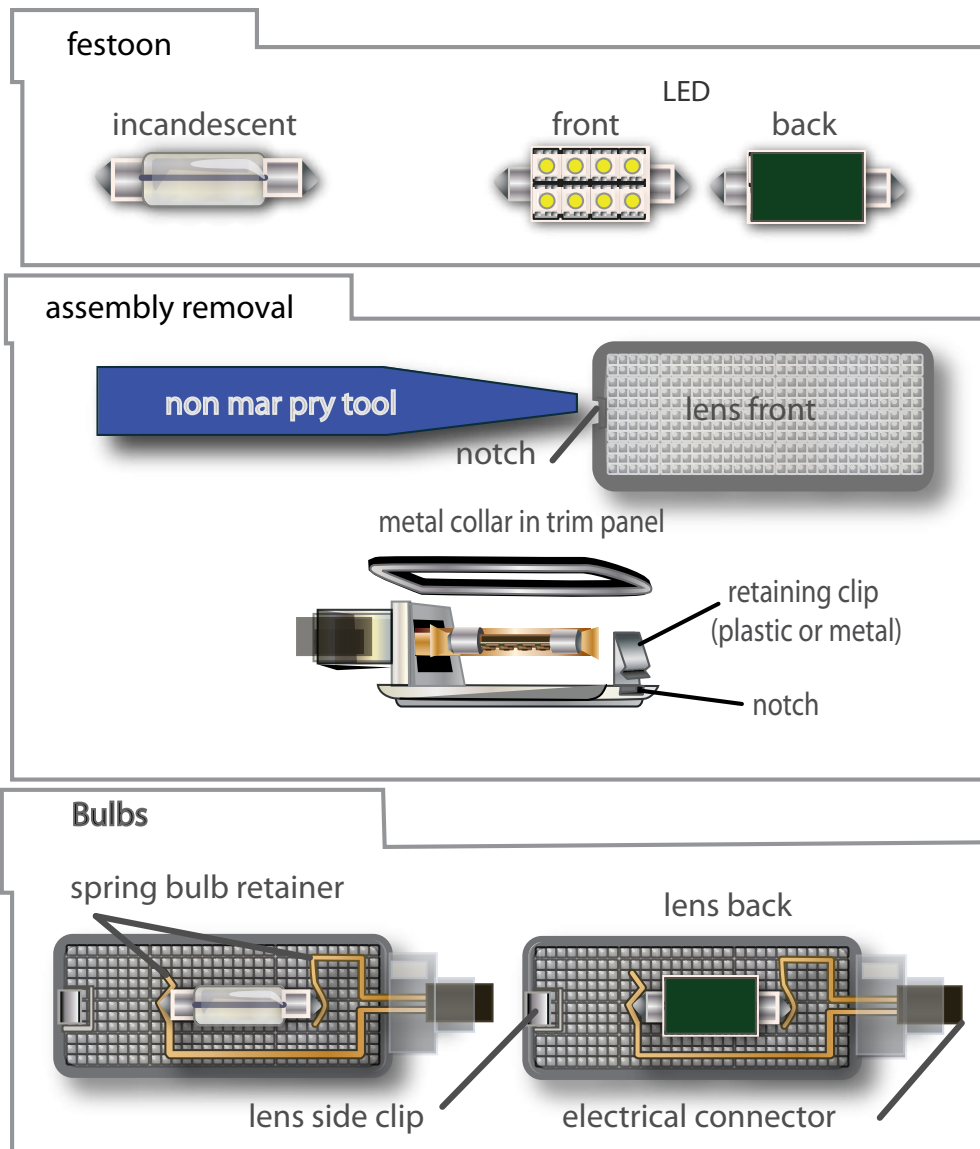
ES2581992



Porsche 997 Turbo

General Tips

- When prying down on the assemblies to remove them, pry on the notched end of the lens. Insert the narrow tool tip **between** the lens plastic and any metal collar used to reinforce the lens mounting hole. Push in on the retaining clip first to compress and release it. Then pry down.
- The spring bulb retainer is also the circuit conductor. If necessary, gently bend the metal retainer so it holds the bulb tight. This will help prevent intermittent or flickering LED operation caused by a loose connection.
- Install the bulbs with the LEDs facing toward the lens.



Ziza Interior Lighting Package Installation

ES2581992



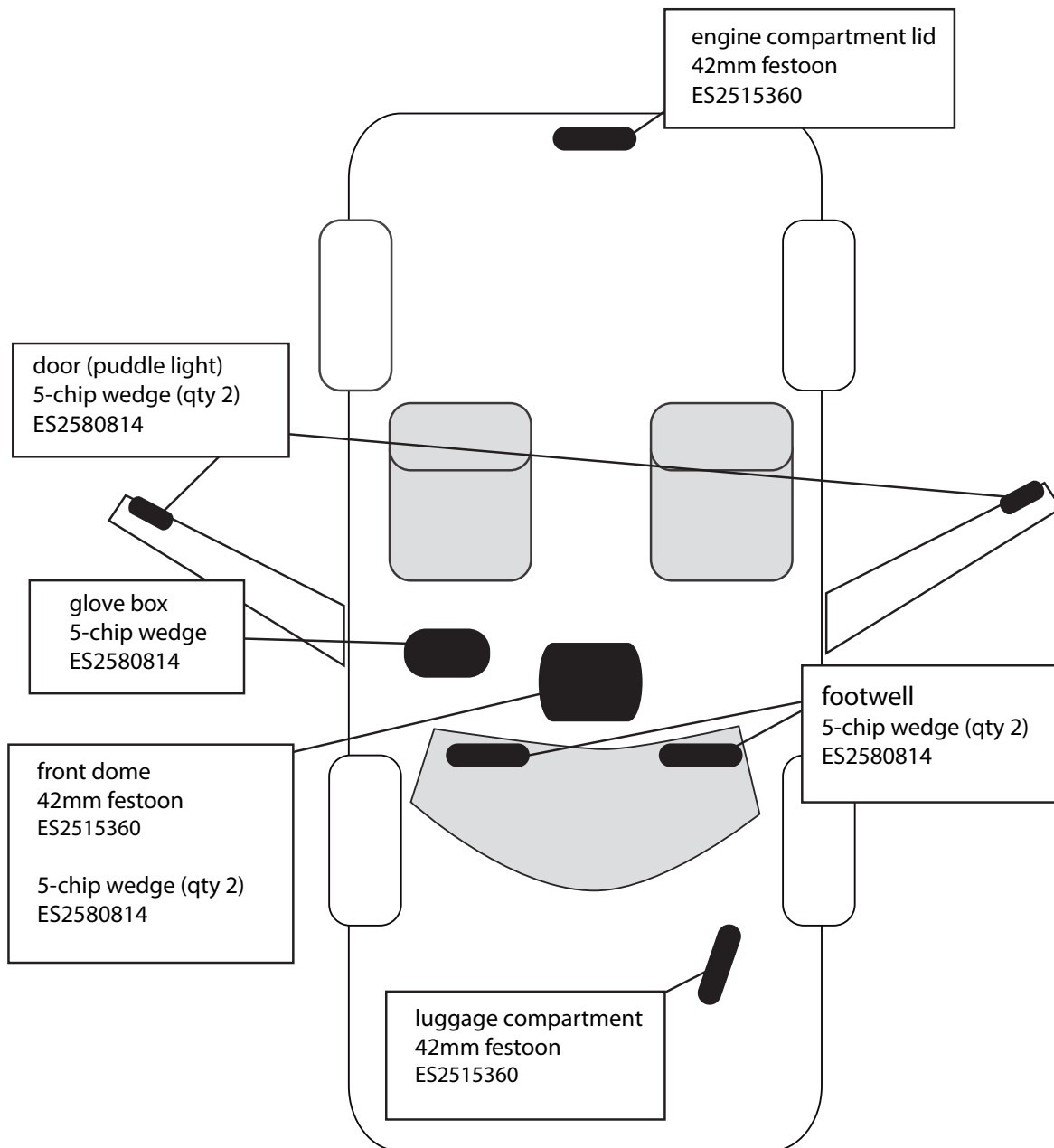
Porsche 997 Turbo

Ziza Interior Lighting Kit Locations

Make _____ Porsche _____

Model _____ 997 Turbo _____

Kit Part Number _____ ES2581992 _____



Front Dome Light Installation



Front Dome - Step 1

Insert the tip of a non-marring trim removal tool between the front edge of the dome light and the overhead console.

Pry down carefully at the two spring clips until the light pops loose.

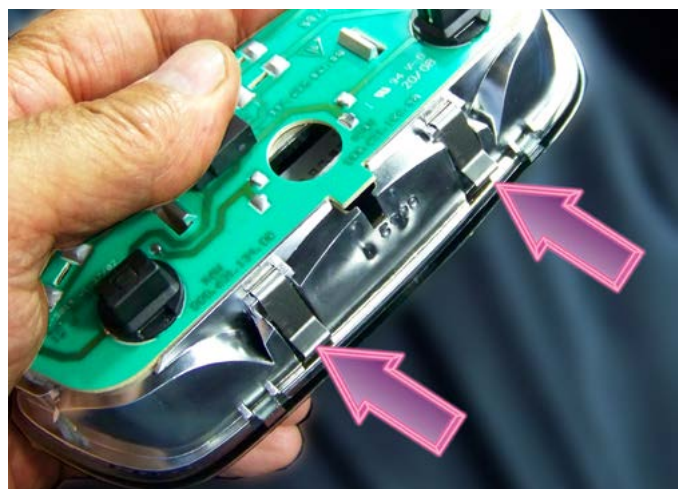
Drop the light down and out.



Front Dome - Step 2

For reference, this photo shows the exact location of the spring clips at the front of the light assembly.

These are the clips compressed with the trim tool in Step 1.



Ziza Interior Lighting Package Installation

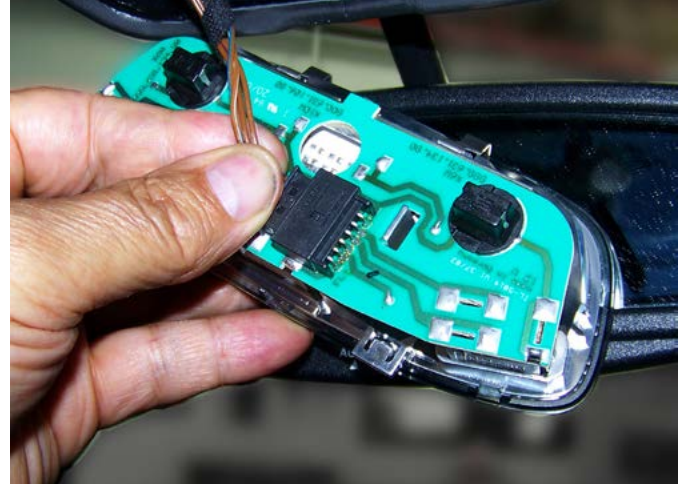
ES2581992



Porsche 997 Turbo

Front Dome - Step 3

Flip the assembly over and unplug the electrical connector. This allows you to take the light assembly to a clean, well-lighted work area for disassembly.



Front Dome - Step 4

Twist the two black bulb holders counterclockwise a quarter turn to remove them from the back of the light assembly.

Remove the old glass wedge base bulbs and install new 5-chip LEDs in their places.

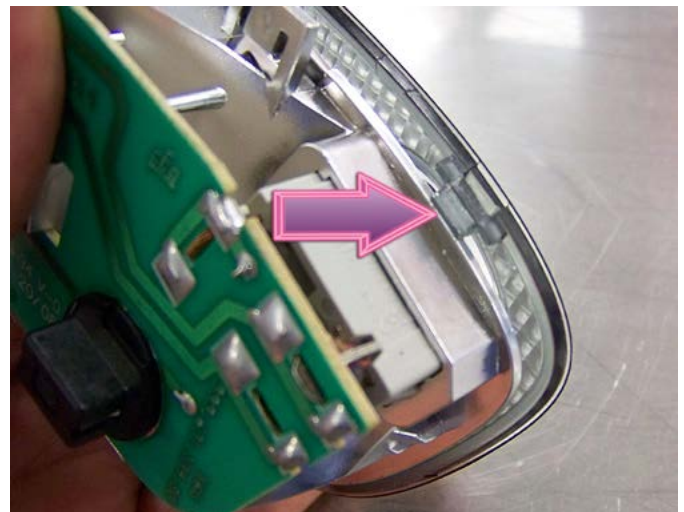
Reinstall the bulb holders.



Front Dome - Step 5

Using the trim removal tool, pry carefully on the plastic clips (arrow) to release the lens cover.

Separate the lens cover from the light assembly.



Ziza Interior Lighting Package Installation

ES2581992



Porsche 997 Turbo

Front Dome - Step 6

Remove the original glass festoon bulb and install a 42mm festoon LED array in its place.

Plug in the electrical connector and test LED operation.

The LEDs are polarity sensitive. If any do not work, remove and flip or rotate them 180 degrees to get them working.



Front Dome - Step 7

When all LEDs are working, snap the lens back in place on the light assembly.



Front Dome - Step 8

Reinstall the light assembly.

Tilt the rear of the assembly upward slightly. Insert its rear tabs into the rear edge of the dome light console opening.

Then swing the front of the lens upward until the spring clips snap in place.



Ziza Interior Lighting Package Installation

ES2581992



Porsche 997 Turbo

Puddle Lamps - Step 1

Using the trim tool, pry on the front edge of the puddle lamps to pop them out.

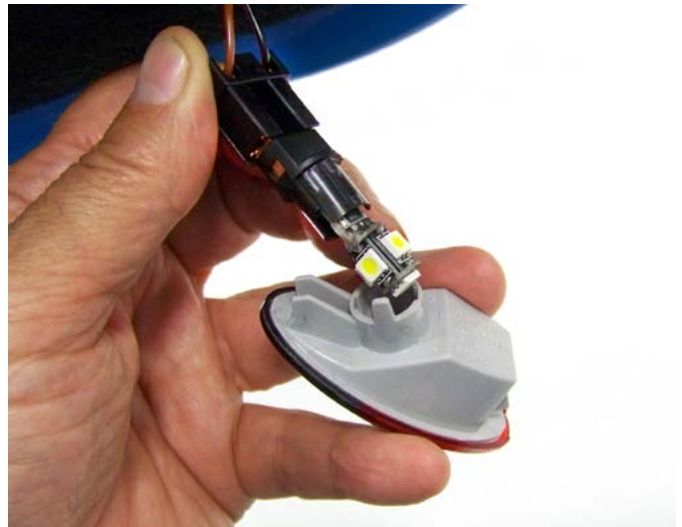


Puddle Lamps - Step 2

Pull the bulb holder straight out of the housing.

Pull the old glass wedge base bulb from the holder and install a new 5-chip LED.

The LEDs are polarity sensitive. If the LED doesn't light when initially installed, pull it out and rotate it 180 degrees in the bulb socket to get it working.



Puddle Lamps - Step 3

Reinsert the bulb holder into the light housing.

Snap the puddle lamp back into the door panel.

Repeat these steps at the opposite door to complete the puddle lamp installation.



Ziza Interior Lighting Package Installation

ES2581992



Porsche 997 Turbo

Footwell Lights - Step 1

Footwell lights are located in the underdash panels above the front footwells.

Using the trim removal tool, pry down on the notched end of the footwell lights to remove them.

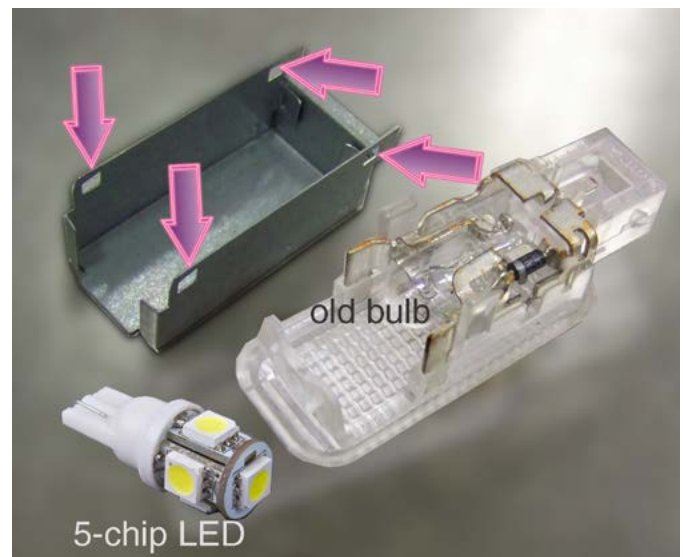


Footwell Lights - Step 2

Footwell lights have metal heat shields. Pry on the shields at the notches (arrows) to release them from the plastic lens assembly.

Lift off the cover and replace the original glass wedge bulbs with 5-chip LEDs.

The LEDs are polarity sensitive. If the LED doesn't light when initially installed, pull it out and rotate it 180 degrees in the bulb socket to get it working.



Footwell Lights - Step 3

Snap the heat shield back in place. If you bent it slightly removing it, just bend the metal back in place.

Reinstall the light assembly in the underdash panel.

Repeat the process at the opposite side to complete the footwell LED installation.



Ziza Interior Lighting Package Installation

ES2581992



Porsche 997 Turbo

Glove Box

Using the trim removal tool, pry down on the notched end of the glove box light to remove it.

Replace the glass bulb in the light assembly with a wedge style 5-chip LED.

The LEDs are polarity sensitive. If the LED doesn't light when initially installed, pull it out and rotate it 180 degrees in the bulb socket to get it working.

Reinstall the light assembly in the glove box.



Luggage Compartment

Open the luggage compartment. Using the trim removal tool, pry down on the notched end of the luggage compartment light to remove it.

Replace the glass bulb with a 42mm festoon LED. The LED chips should face the lens.

The LEDs are polarity sensitive. If the LED array doesn't light when initially installed, pull it out and flip it end-for-end to get it working.

Reinstall the light in the luggage compartment liner.



Engine Compartment

Use the same procedure to replace the engine compartment light.

Pry on the notched end of the light to remove it. Replace the festoon glass bulb with a 42mm festoon LED.

The LEDs are polarity sensitive. If the LED array doesn't light when initially installed, pull it out and flip it end-for-end to get it working.

Reinstall the light in the engine compartment lid.



Ziza Interior Lighting Package Installation

ES2581992



Porsche 997 Turbo

This concludes the installation of the Ziza Interior Light Kit.



Prevent damage to interior panels, the headliner, and trim.
Use a plastic, non-marring trim removal tool.
Two complete kits are available.

Make the job easier and prevent damage to headliners
and other interior trim with **ECS Tuning Trim and Molding
Removal Tool Sets: [ES2500877](#) and [ES517779](#).**