



## Installation Procedures

### MKIV Stage 2v2 Big Brake Kit Product Advisory

**This tutorial is provided as a courtesy by ECS Tuning.**

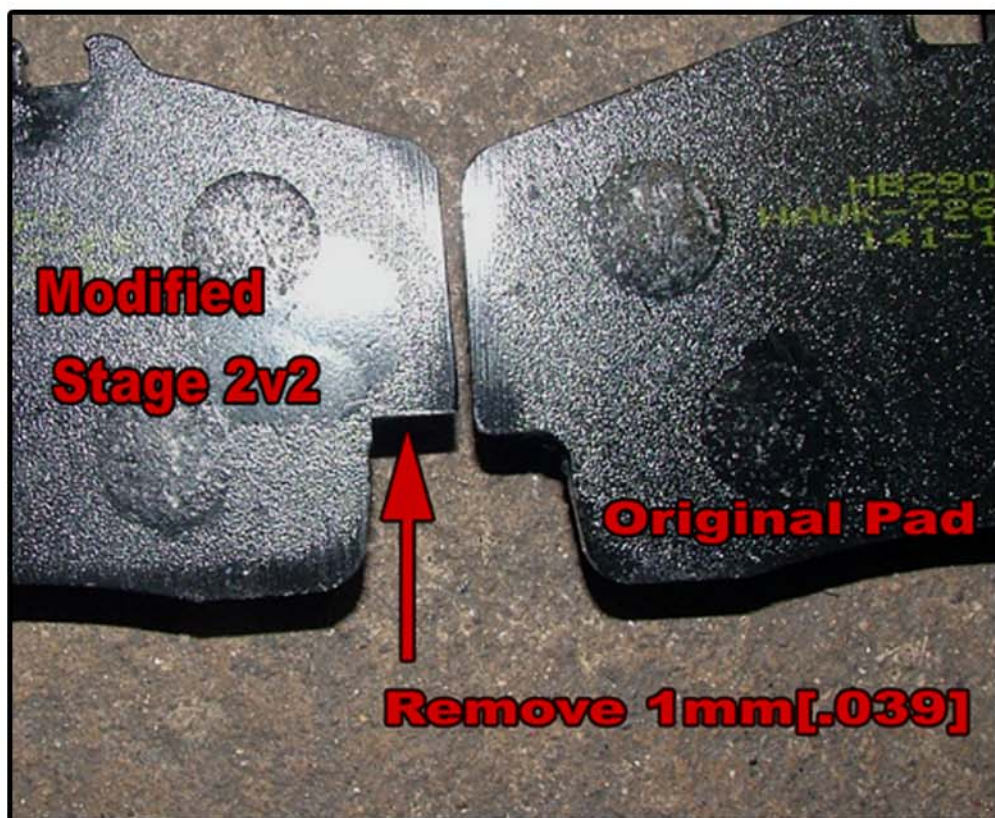
Proper service and repair procedures are vital to the safe, reliable operation of all motor vehicles as well as the personal safety of those performing the repairs. Standard safety procedures and precautions (including use of safety goggles and proper tools and equipment) should be followed at all times to eliminate the possibility of personal injury or improper service which could damage the vehicle or compromise its safety.

Although this material has been prepared with the intent to provide reliable information, no warranty (express or implied) is made as to its accuracy or completeness. Neither is any liability assumed for loss or damage resulting from reliance on this material. SPECIFICALLY, NO WARRANTY OF MERCHANTABILITY, FITNESS FOR A PARTICULAR PURPOSE OR ANY OTHER WARRANTY IS MADE OR TO BE IMPLIED WITH RESPECT TO THIS MATERIAL. In no event will ECS Tuning, Incorporated or its affiliates be liable for any damages, direct or indirect, consequential or compensatory, arising out of the use of this material.



## PRODUCT ADVISORY:

ECS Volkswagen MKIV Stage 2v2 Big Brake Kit  
Kits purchased after February 15th 2004



As of February 15th 2004, all MKIV Volkswagen Stage 2version2 big brake kits purchased direct from ECS Tuning require minor pad modification. Kits purchased prior should continue to use unmodified pads. This change is due in fact that ECS no longer modifies the caliper guide pins to allow the pads to sit close to the rotational center of the rotor.

Note if you purchase replacement pads for your brake kit from ECS Tuning, please be sure to specify that they are for a Stage 2v2 kit so they can be modified at no cost before they are shipped.

While ECS recommends that you modify the pads to allow 100% contact between the pad and rotor surface area, it is not absolutely required. We have tested kits without pad modification and the small amount of pad material that overhangs the rotor simply breaks away as the pads wear.

If you have any questions regarding this notice, or your ECS Big Brake Kit, please contact us at the above number or email at [sales@ECSTuning.com](mailto:sales@ECSTuning.com)

ECS Tuning  
1000 Seville Road, Wadsworth, OH 44281  
Phone: 1.800.924.5172 [www.ecstuning.com](http://www.ecstuning.com)