



VW MKIV Golf/GTI

Hatch Pop Kit

Installation
Instructions



ES2661176

This tutorial is provided as a courtesy by ECS Tuning.

Proper service and repair procedures are vital to the safe, reliable operation of all engine vehicles as well as the personal safety of those performing the repairs. Standard safety procedures and precautions (including use of safety goggles and proper tools and equipment) should be followed at all times to eliminate the possibility of personal injury or improper service which could damage the vehicle or compromise its safety.

Although this material has been prepared with the intent to provide reliable information, no warranty (express or implied) is made as to its accuracy or completeness. Neither is any liability assumed for loss or damage resulting from reliance on this material. SPECIFICALLY, NO WARRANTY OF MERCHANTABILITY, FITNESS FOR A PARTICULAR PURPOSE OR ANY OTHER WARRANTY IS MADE OR TO BE IMPLIED WITH RESPECT TO THIS MATERIAL. In no event will ECS Tuning, Incorporated or its affiliates be liable for any damages, direct or indirect, consequential or compensatory, arising out of the use of this material.



Now you can pop your rear hatch with the press of a single button on your key fob. The innovative **Hatch Pop Kit** includes a solenoid-operated latch release, wire harness, and two strong lifting struts that raise the hatch as soon as the latch is released.

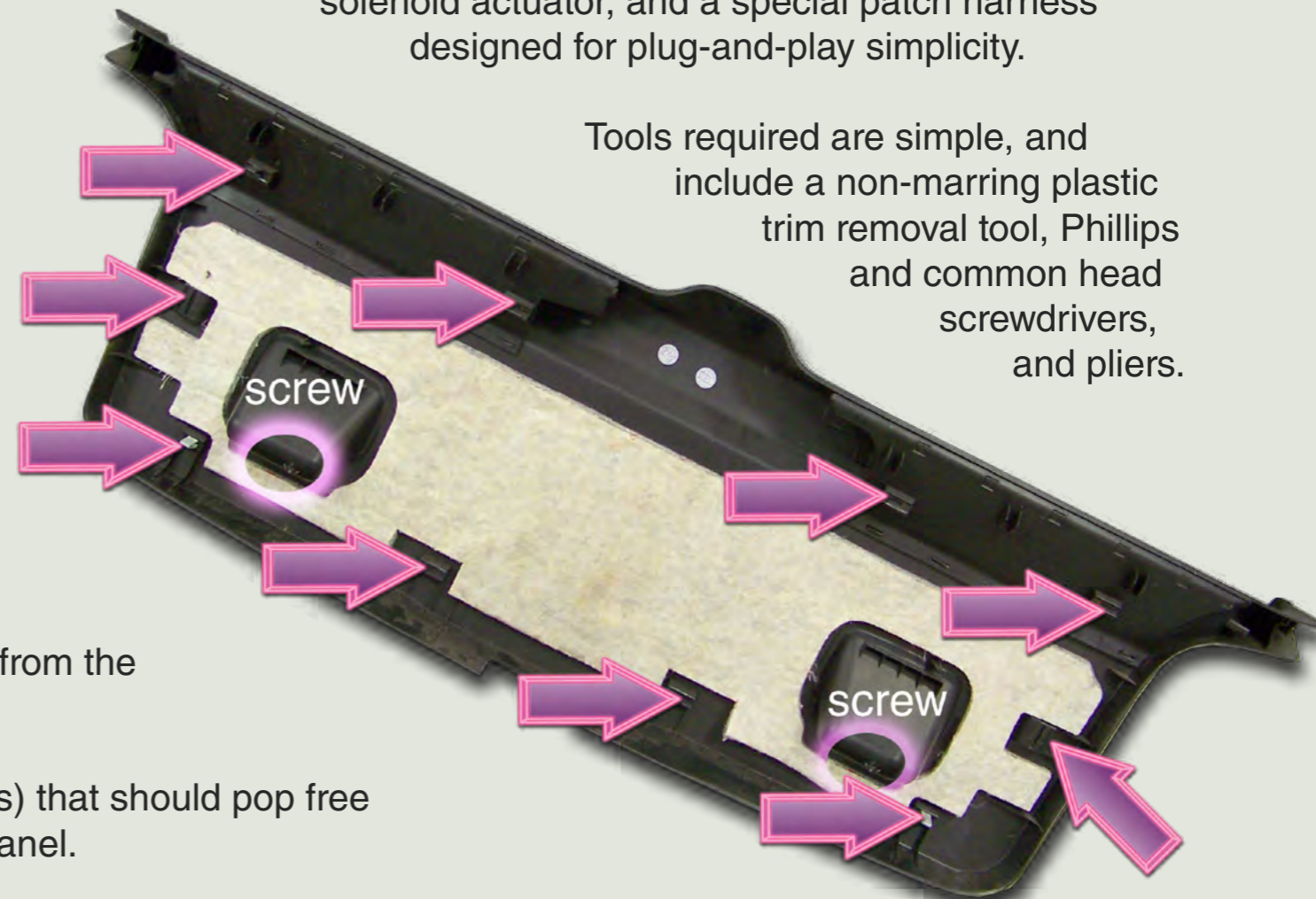
Installation requires removal of the rear hatch inner trim panel. Inside the hatch, you will install mounting grommets, a new solenoid actuator, and a special patch harness designed for plug-and-play simplicity.

Let's get started.

- Raise the rear hatch.
- Remove the two Phillips head screws located inside the pull recesses in the rear trim panel (circled).
- Use a trim removal tool to pry the inner panel away from the hatch.

The panel is held in place by metal spring clips (arrows) that should pop free one at a time as you pry around the perimeter in the panel.

See next page for photos.



Tools required are simple, and include a non-marring plastic trim removal tool, Phillips and common head screwdrivers, and pliers.

Hatch trim panel rear view.



After removing the two screws in the trim panel, pry down with a plastic trim removal tool.

Work around the perimeter of the panel until it comes loose. Remove it.

Note: The trim tool shown is from the 5-piece trim removal set, [ES517779](#).

With the panel removed, the lock and latch mechanisms are exposed.



Original Hatch Components

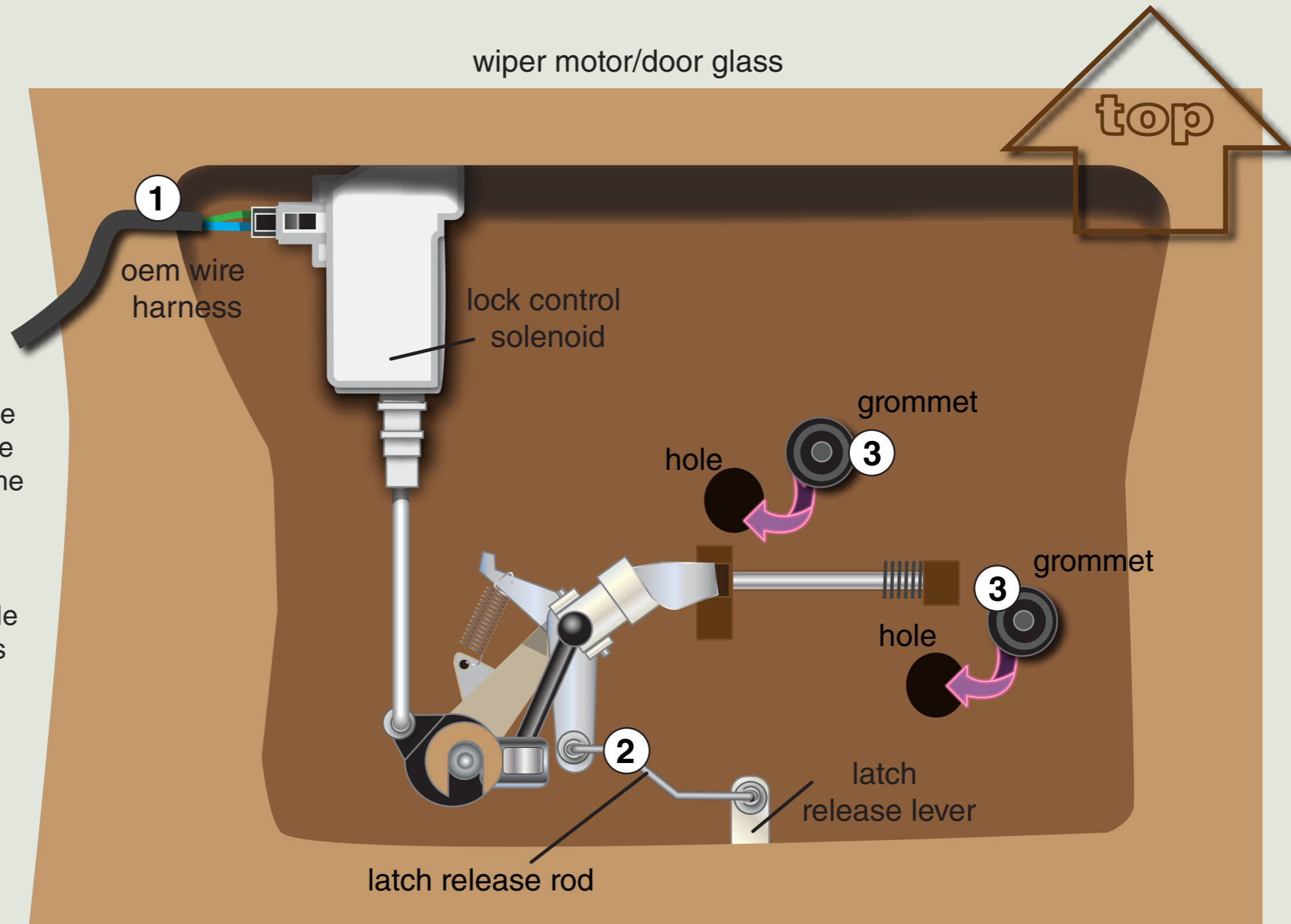
This schematic illustrates the factory installed components and their general locations inside the rear hatch.

We'll concentrate on the components involved in the installation.

A voltage signal on the **OEM wire harness (1)** activates the lock control solenoid when the unlock button is pressed on the key fob.

The **latch release rod (2)** connects the hatch pull handle to the latch release lever. This will be replaced with the new latch release rod in the kit.

Press the two mounting **grommets (3)** in your kit into the factory holes in the hatch metal. These grommets will be used to mount your new latch release solenoid.



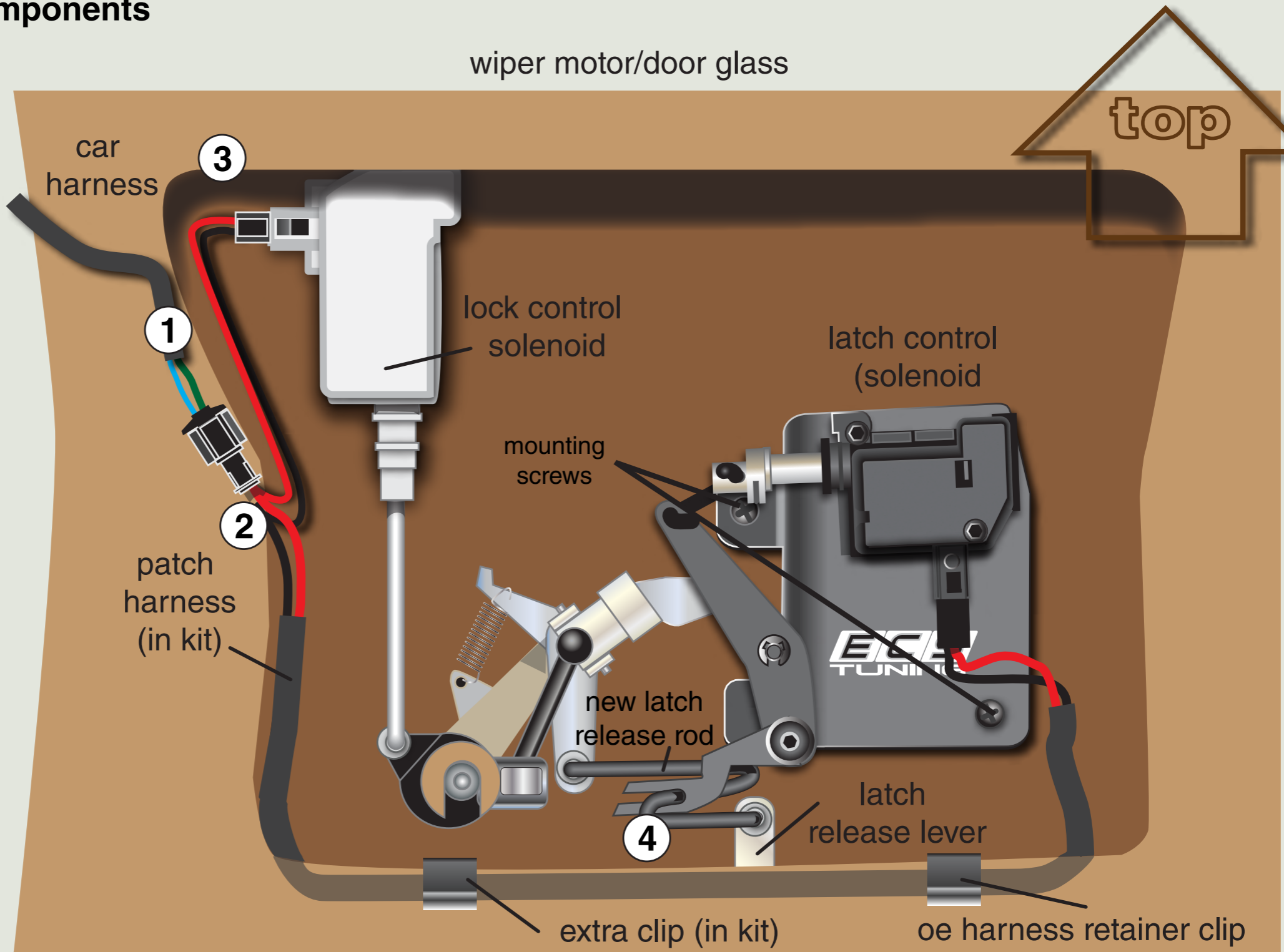
Install New Components

Unplug the **car harness (1)** from the lock control solenoid.

Connect the **car harness (1)** to the short side of the **patch harness (2)**.

Plug the shorter lead from the patch harness into the **lock control solenoid (3)**.

Remove the original latch release rod (see item on previous page) and replace it with the new **latch release rod in the kit (4)**.



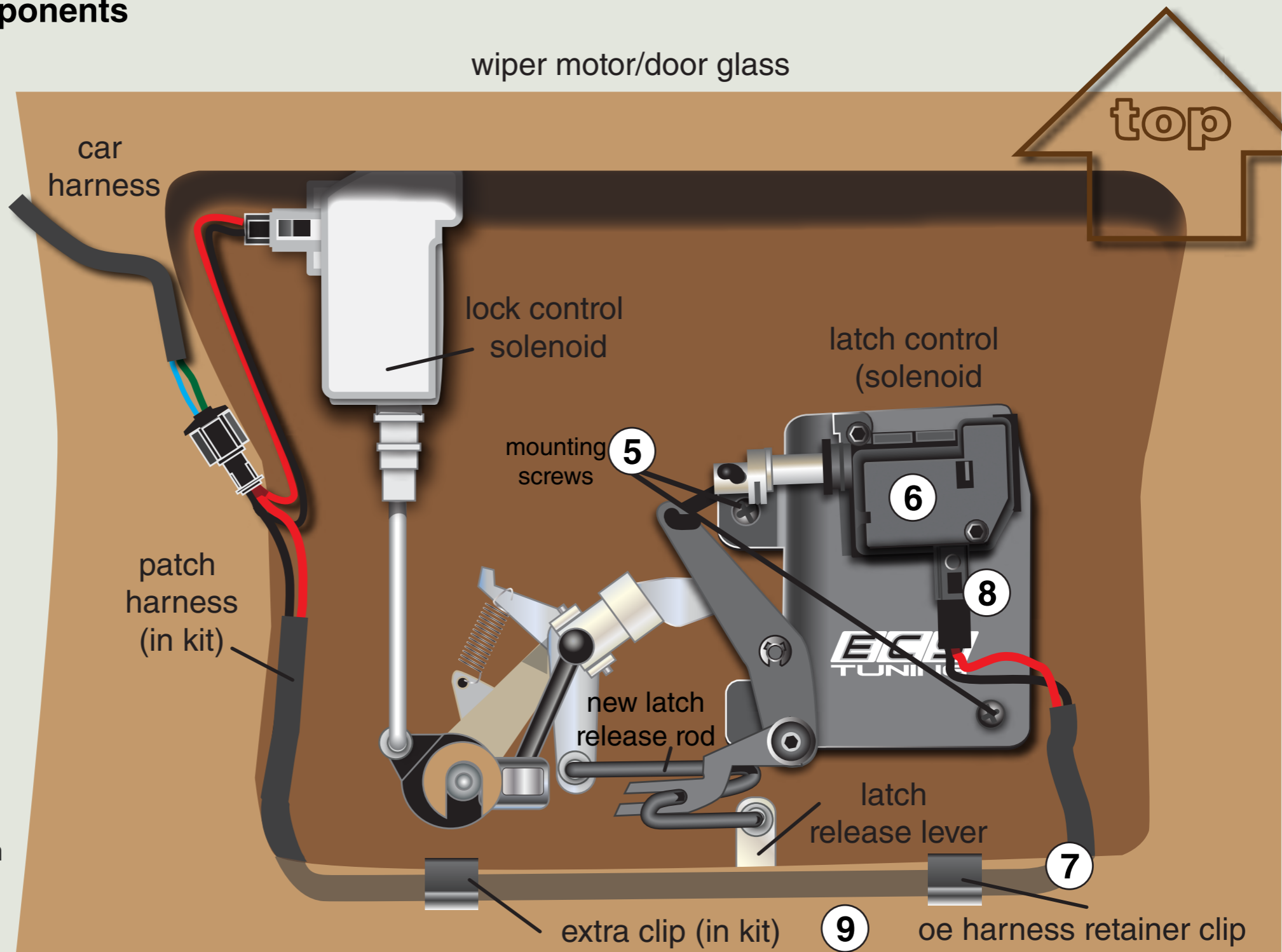
Install New Components

Use the **mounting screws (5)** from the kit to attach the **latch control solenoid (6)** to the grommets installed earlier.

Run the long lead from the **patch harness (7)** along the edge of the stamped metal opening in the hatch.

Plug the patch harness into the **latch control solenoid (8)**.

Secure the patch harness to the edge of the opening in the hatch using the **OEM harness clip and the extra clip included in your kit (9)**.



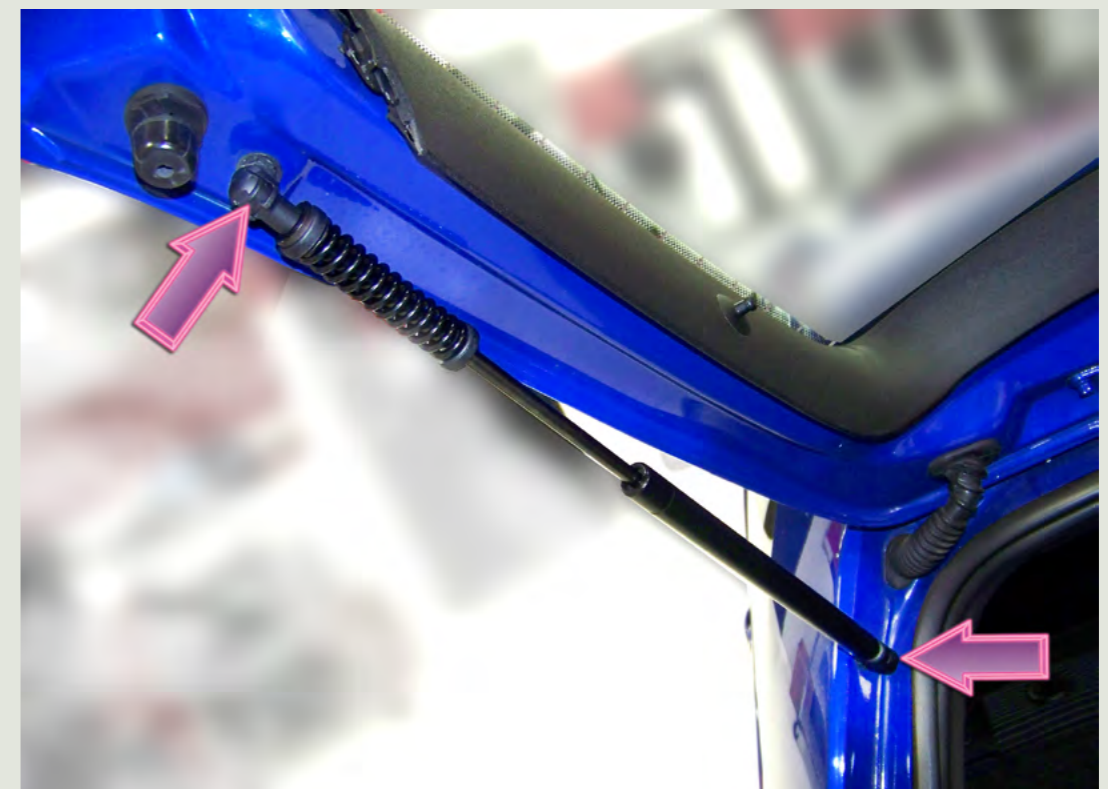
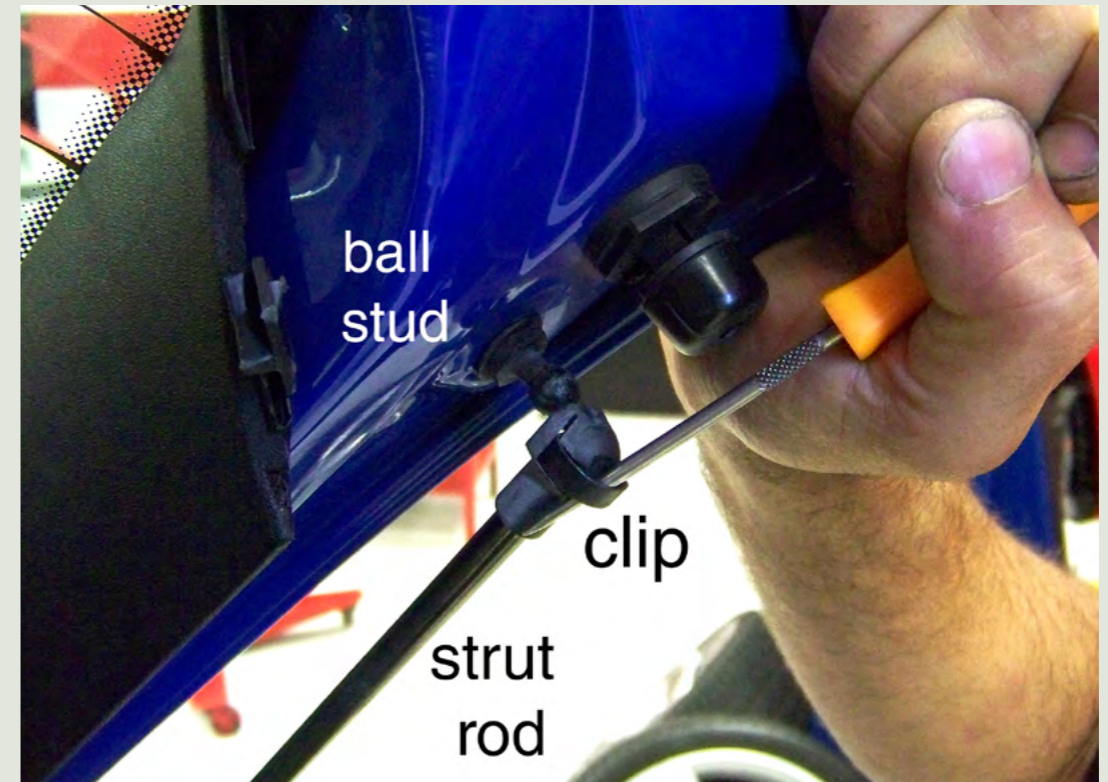
Install the Struts

CAUTION: Prop the hatch open with a rigid support that will not allow the hatch to fall on you as you remove the old struts and install the new ones.

Use a pick or small screwdriver to pry out the retainer clips at top and bottom that secure the ball sockets to the chassis studs.

Your new struts come pre-assembled. Just push the open end of the each socket over the ball studs until they snap and lock in place.

Make sure the springs are located at the bottom with the door closed.



Test and Reassemble

CAUTION: The rear hatch will open VERY quickly when released. Stand clear as you press the hatch release button on the key fob.

Note: Your hatch can still be opened manually using the bayonet key and hatch release handle.

When you have tested hatch operation, snap the inner trim panel back in place and replace the two Phillips screws removed earlier.

This completes the installation of the ECS Tuning MKIV Golf/GTI Hatch Pop Kit.



ES2661176

**Thanks for purchasing the
ECS Tuning Hatch Pop Kit.**

**We appreciate your business,
and hope this tutorial has
been helpful and informative.**