

ECS TUNING
STREET SHIELD
ALUMINUM SKID PLATE



VW MKVI Jetta
VW 12+ Beetle



Proper service and repair procedures are vital to the safe, reliable operation of all motor vehicles as well as the personal safety of those performing the repairs. Standard safety procedures and precautions (including use of safety goggles and proper tools and equipment) should be followed at all times to eliminate the possibility of personal injury or improper service which could damage the vehicle or compromise its safety.

For this installation, we will use:

- T25 Torx bit
- 5mm Hex drive
- 1/4" Ratchet
- 3/8" Ratchet

Tools not used but may be required depending on the application:

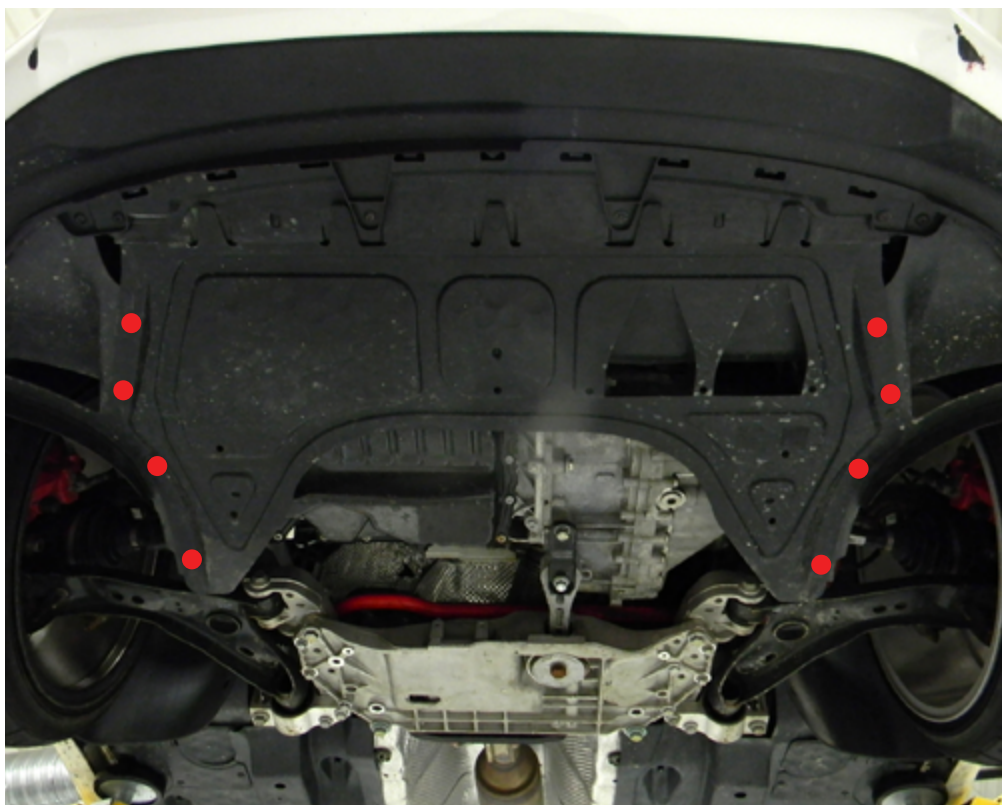
- 6mm or 1/4" drill bit
- Drill



STEP 1

Remove the eight T25 screws*, then slide the belly pan toward the rear of the car to uninstall.

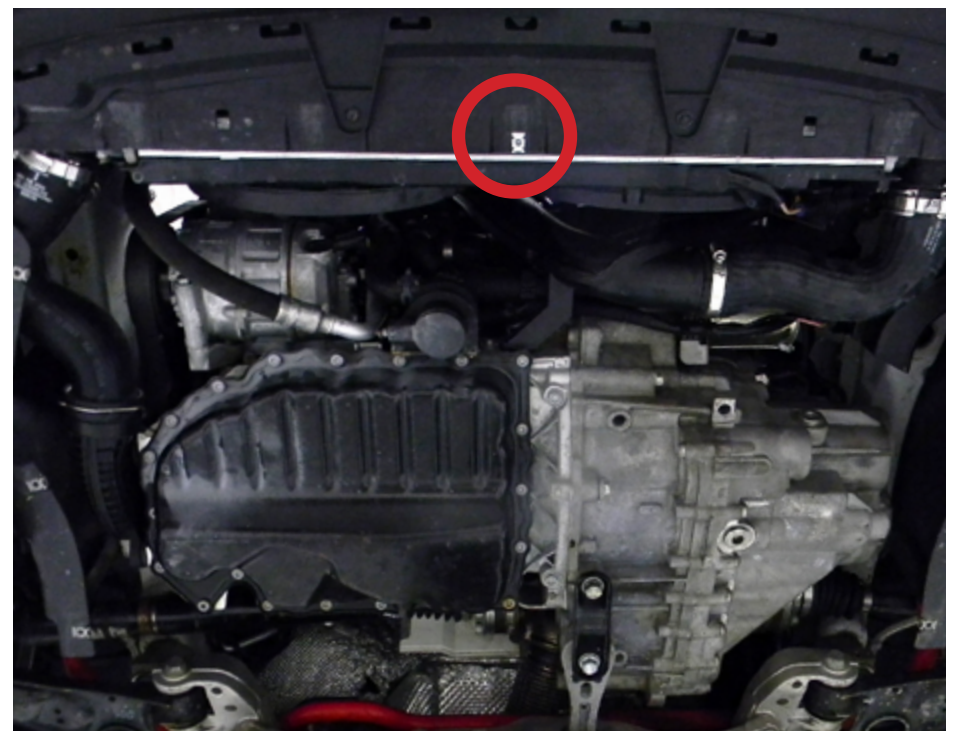
*Locations indicated in the photo below by the red dots



STEP 2

Install one of the included speed clips in the location depicted on the radiator support. If the hole in the picture does not exist on your radiator support, drill one with a 6mm or 1/4" drill bit.

*Additional speed clips included to replace any damaged or lost clips on the fender liners.



STEP 3

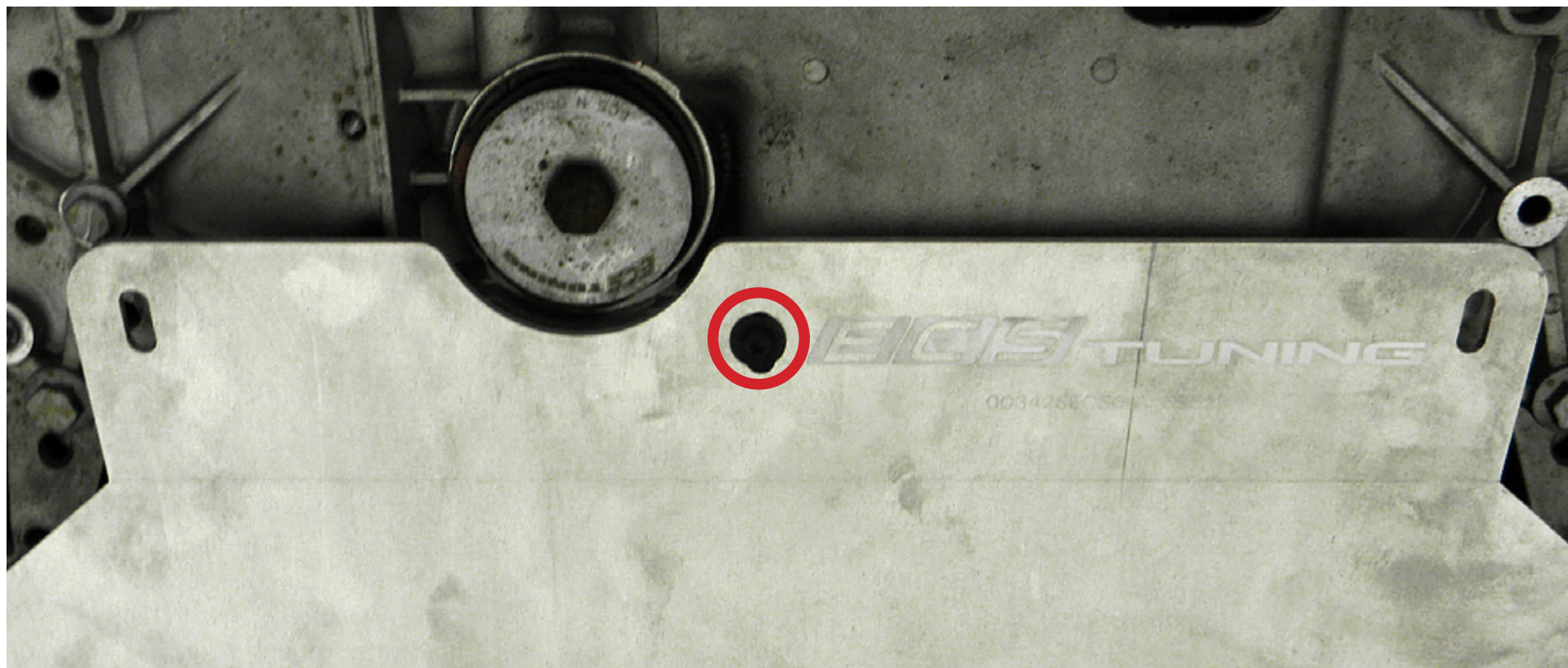
Slide the forward-facing tabs into the radiator support, making sure to align the slotted tab with the speed clip you installed in the previous step.



STEP 4

Once you have the tabs in place, align the holes at the rear of the skid plate with the three threaded holes on the subframe.

Thread the center bolt in without any spacer to hold the skid plate in place.



STEP 5

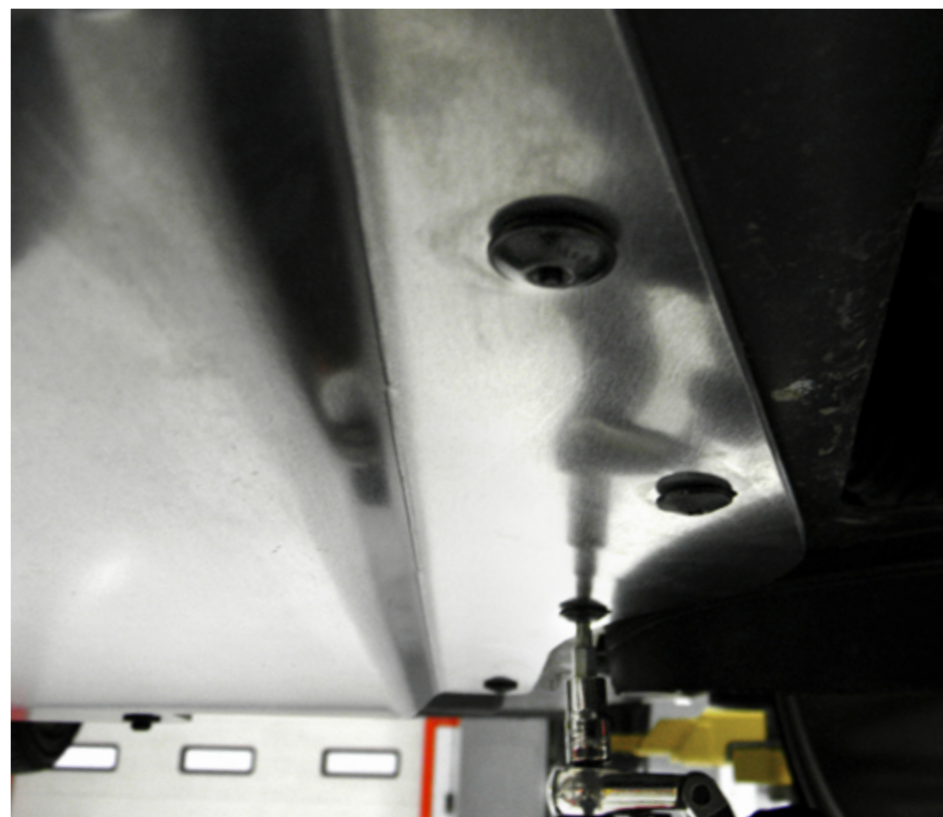
With the center bolt threaded in, install the two thicker spacers with the longer bolts into the threaded holes in the subframe. Do not tighten these at this time.

Remove the center bolt, place the thinner of the three spacers between the skidplate and subframe, reinstall the remaining bolt and hand-tighten.

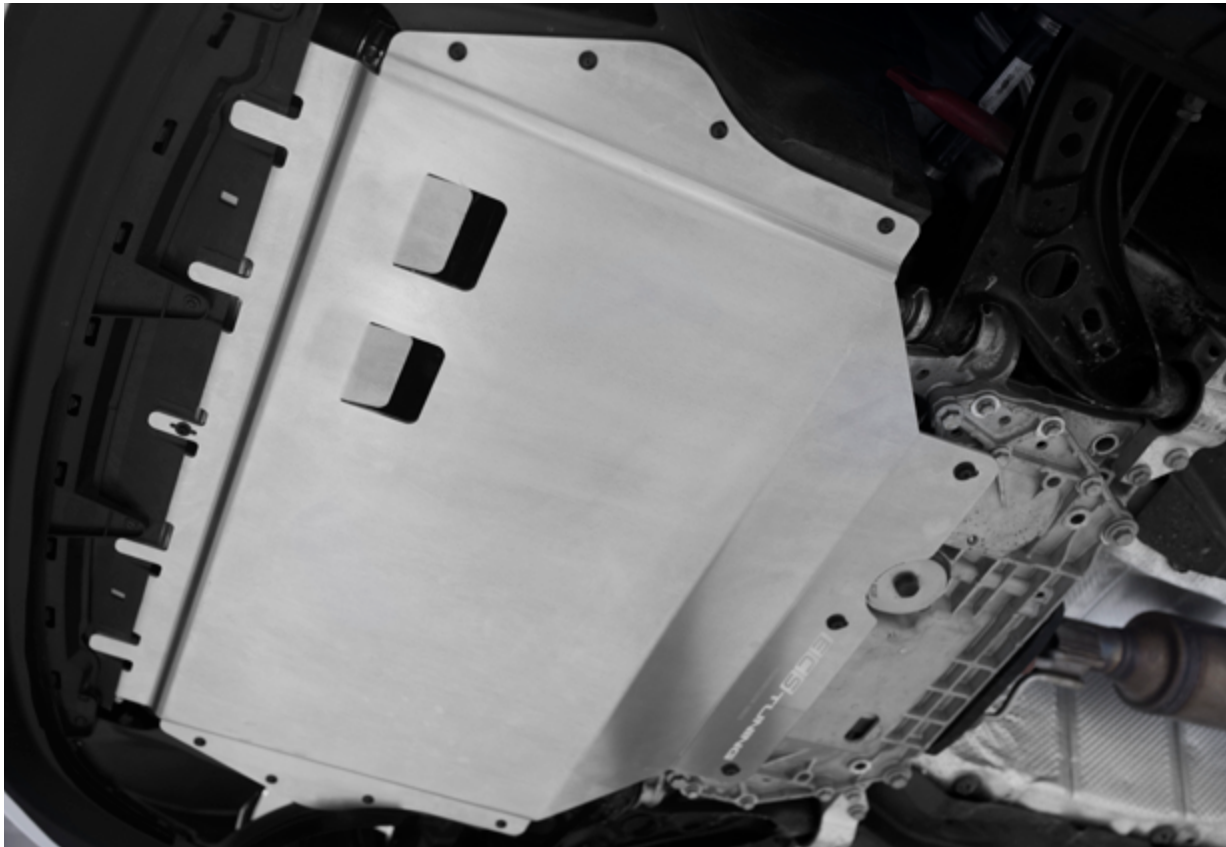


STEP 6

Install eight of the included T25 screws into the speed clips in the fender liners. Install the last T25 screw through the slotted tab at the front of the skid plate into the speed clip you installed in Step 2. Tighten all fasteners.



Your install is now complete. Enjoy your new ECS Street Shield Aluminum Skid Plate



This tutorial is provided as a courtesy by ECS Tuning.

Proper service and repair procedures are vital to the safe, reliable operation of all motor vehicles as well as the personal safety of those performing the repairs. Standard safety procedures and precautions (including use of safety goggles and proper tools and equipment) should be followed at all times to eliminate the possibility of personal injury or improper service which could damage the vehicle or compromise its safety.

Although this material has been prepared with the intent to provide reliable information, no warranty (express or implied) is made as to its accuracy or completeness. Neither is any liability assumed for loss or damage resulting from reliance on this material. SPECIFICALLY, NO WARRANTY OF MERCHANTABILITY, FITNESS FOR A PARTICULAR PURPOSE OR ANY OTHER WARRANTY IS MADE OR TO BE IMPLIED WITH RESPECT TO THIS MATERIAL. In no event will ECS Tuning, Incorporated or its affiliates be liable for any damages, direct or indirect, consequential or compensatory, arising out of the use of this material.