

Ziz2

Mercedes-Benz W204 License Plate LED Kit
Installation Tutorial

ECS
TUNING®

ES2730885



THIS TUTORIAL IS PROVIDED AS A COURTESY BY ECS TUNING.

PROPER SERVICE AND REPAIR PROCEDURES ARE VITAL TO THE SAFE, RELIABLE OPERATION OF ALL MOTOR VEHICLES AS WELL AS THE PERSONAL SAFETY OF THOSE PERFORMING THE REPAIRS. STANDARD SAFETY PROCEDURES AND PRECAUTIONS (INCLUDING USE OF SAFETY GOGGLES AND PROPER TOOLS AND EQUIPMENT) SHOULD BE FOLLOWED AT ALL TIMES TO ELIMINATE THE POSSIBILITY OF PERSONAL INJURY OR IMPROPER SERVICE WHICH COULD DAMAGE THE VEHICLE OR COMPROMISE ITS SAFETY.

ALTHOUGH THIS MATERIAL HAS BEEN PREPARED WITH THE INTENT TO PROVIDE RELIABLE INFORMATION, NO WARRANTY (EXPRESS OR IMPLIED) IS MADE AS TO ITS ACCURACY OR COMPLETENESS. NEITHER IS ANY LIABILITY ASSUMED FOR LOSS OR DAMAGE RESULTING FROM RELIANCE ON THIS MATERIAL. SPECIFICALLY, NO WARRANTY OF MERCHANTABILITY, FITNESS FOR A PARTICULAR PURPOSE OR ANY OTHER WARRANTY IS MADE OR TO BE IMPLIED WITH RESPECT TO THIS MATERIAL. IN NO EVENT WILL ECS TUNING, INCORPORATED OR ITS AFFILIATES BE LIABLE FOR ANY DAMAGES, DIRECT OR INDIRECT, CONSEQUENTIAL OR COMPENSATORY, ARISING OUT OF THE USE OF THIS MATERIAL.

What are LEDs?

LEDs are Light Emitting Diodes, solid state devices that emit light when connected to electrical current. They have no moving parts or wire filaments to burn out. They emit a whiter light, run cooler, and last longer than the incandescent (filament style bulbs) we are replacing in this tutorial.

Unlike filament bulbs, LEDs are polarity sensitive. They have plus and minus (positive and negative) electrical terminals that must match the polarity of the applied voltage. Installing the bulbs “backwards” in the light bulb sockets (with reversed polarity) will not harm them, but they will not light. Flipping the bulb 180 degrees in the electrical connector cures this problem.

Bulb Types

This kit includes three bulb types, classified by their general shape.

FESTOON - Conventional incandescent festoon bulbs have a shape and general appearance that is similar to a glass fuse.

Metal caps attached to both ends of a glass tube are sealed to the tube and attached to the bulb filament. End caps mount the bulb in its holder and also conduct electrical current.

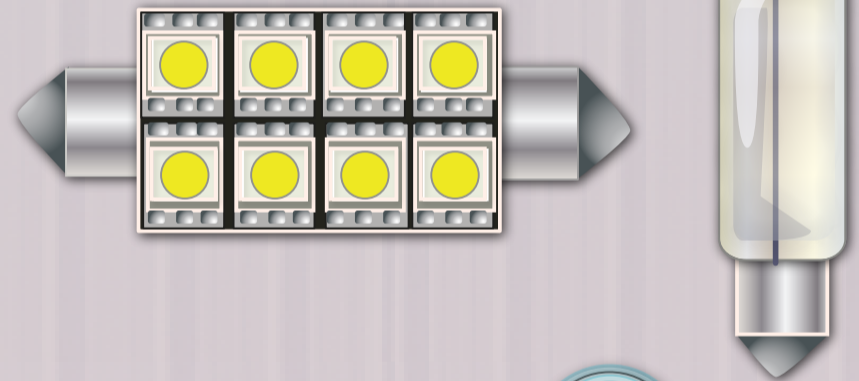
LED festoon lights have the same pointed end caps, but are attached to a bank of LEDs instead of a filament tube.

WEDGE - Wedge style bulbs get their name from the shape of the bulb base. The tapered end of the bulb “wedges” into the bulb socket.

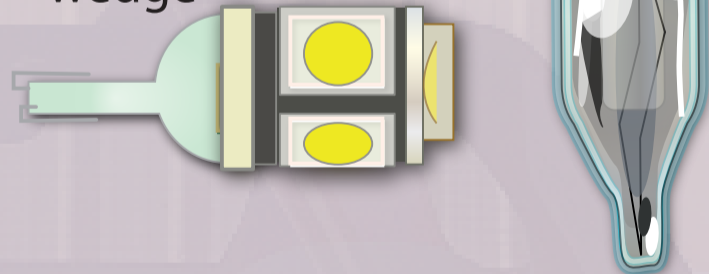
LED wedge lights fit the bulb socket like a filament bulb, but are polarity sensitive.

You will be using a T10 Base Cool White 8 Chip LED for this installation.

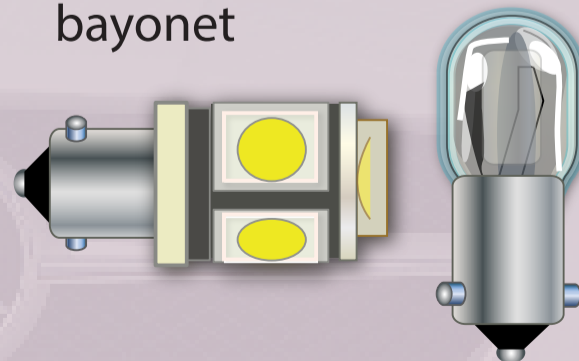
festoon



wedge

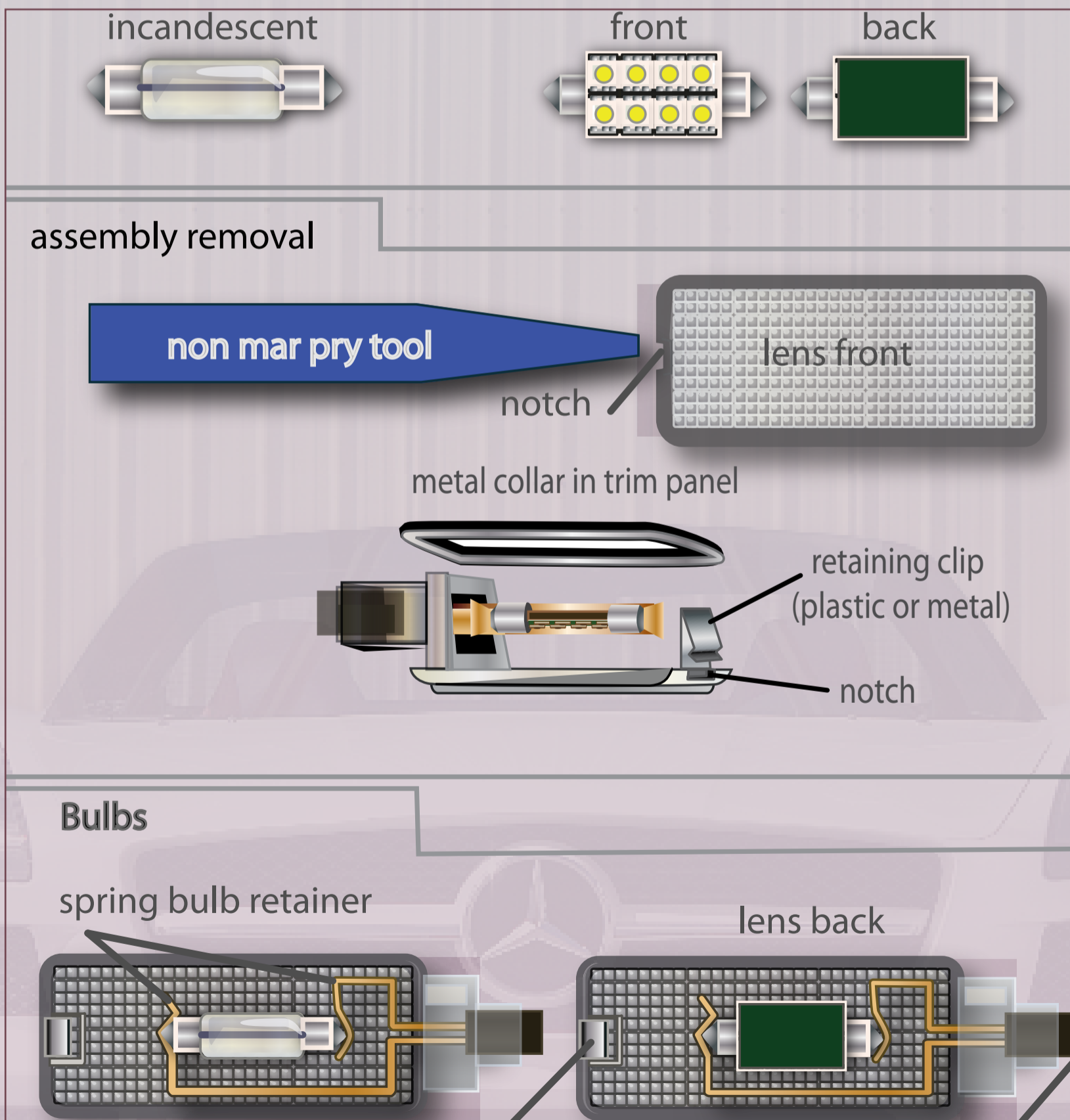


bayonet



General Tips

- When prying down on the assemblies to remove them, pry on the notched end of the lens. Insert the narrow tool tip between the lens plastic and any metal collar used to reinforce the lens mounting hole. Push in on the retaining clip first to compress and release it. Then pry down.
- The spring bulb retainer is also the circuit conductor. If necessary, gently bend the metal retainer so it holds the bulb tight. This will help prevent intermittent or flickering LED operation caused by a loose connection.
- Install the bulbs with the LEDs facing toward the lens.



To access your license plate bulbs, the bottom plastic trunk trim, cloth trunk lining, plastic trunk arm trim, and secondary trunk bulb will require removal.

Begin by removing the four phillips head screws on the bottom side of the trunk lid.



When the screws are removed, use the non-marring tool to dislodge the three trim clips. Insert the tool underneath the plastic housing and pry outwards to displace the clip.



Pull down the black plastic trunk lining to reveal the rear of the secondary bulb housing. Twist out the bulb.



Use the non-marring tool to pry out the retainer clip from the plastic trunk arm covering. Set this piece to the side.



Once the trunk arm trim is set aside, remove the cloth trunk lining by removing any plastic clips that hold the lining in place.



With the lining removed, the access point for the license plate bulb is visible. Twist out the incandescent bulb as shown.



Replace the incandescent bulb with the T10 Base Cool White 8 Chip LED.

NOTE: To make sure the LED is installed correctly, switch your headlight knob to the permanent "on" position. If the LEDs do not light, take them out and turn them 180 degrees and reinstall. They will now light.



After installing your new LED bulbs, reinstall the cloth lining and secure all clips.

NOTE: When reinstalling the plastic trunk arm covers, take note of the cloth lining in relation to the trunk cover's retainer tab. You must restore the tab's original position behind the cloth lining, shown correctly in the right picture.



Once your full set of LED's are installed, turn the ignition to the second position and re-inspect each bulb location making sure there is no light flickering.

Your newly installed Ziza LEDs will emit a whiter light, run cooler, and last longer!