



Installation Procedures

ECS MKIV Carbon Fiber Cold Air Intake System Installation Instructions 1.8T/VR6/2.0

This tutorial is provided as a courtesy by ECS Tuning.

Proper service and repair procedures are vital to the safe, reliable operation of all motor vehicles as well as the personal safety of those performing the repairs. Standard safety procedures and precautions (including use of safety goggles and proper tools and equipment) should be followed at all times to eliminate the possibility of personal injury or improper service which could damage the vehicle or compromise its safety.

Although this material has been prepared with the intent to provide reliable information, no warranty (express or implied) is made as to its accuracy or completeness. Neither is any liability assumed for loss or damage resulting from reliance on this material. SPECIFICALLY, NO WARRANTY OF MERCHANTABILITY, FITNESS FOR A PARTICULAR PURPOSE OR ANY OTHER WARRANTY IS MADE OR TO BE IMPLIED WITH RESPECT TO THIS MATERIAL. In no event will ECS Tuning, Incorporated or its affiliates be liable for any damages, direct or indirect, consequential or compensatory, arising out of the use of this material.



ECS MKIV Carbon Fiber Cold Air Intake System Installation Instructions 1.8T/VR6/2.0

Safety first:

As always, when performing any work on your vehicle it is important that you make safety your main concern. If using a jack, properly support the vehicle with jack stands on each side. Never work under a vehicle supported only by a jack.

Note: The Following installation was done on a Volkswagen MKIV 1.8T Jetta. Installation for other vehicles will be similar.

Tools Required:

- Jack –optional
- Jack stands –optional
- #2 Phillips screwdriver
- #2 Flat head screwdriver
- Socket wrench
- 10mm socket
- 13mm socket
- 10” socket extension
- 10mm open end wrench

Preparation:

Park the vehicle on a level, suitable working area.

Be sure to put the vehicle in gear and/or in park and engage the parking brake.

Allow the engine time to cool to ambient temperatures to avoid the possibility of burns.

MKIV Carbon Fiber Cold Air Intake System Installation Instructions



Step One: Removal of the factory air box.



Begin the installation by removing the two Phillips screws that secure the air box lid.



Next, remove the two Phillips screws that hold the mass airflow sensor to the air box lid. Set the air box lid and filter aside.

MKIV Carbon Fiber Cold Air Intake System Installation Instructions



Remove the bottom half of the air box by removing the two 10mm bolts that secure it in place.

Step Two: Removal of the air duct and air duct guide

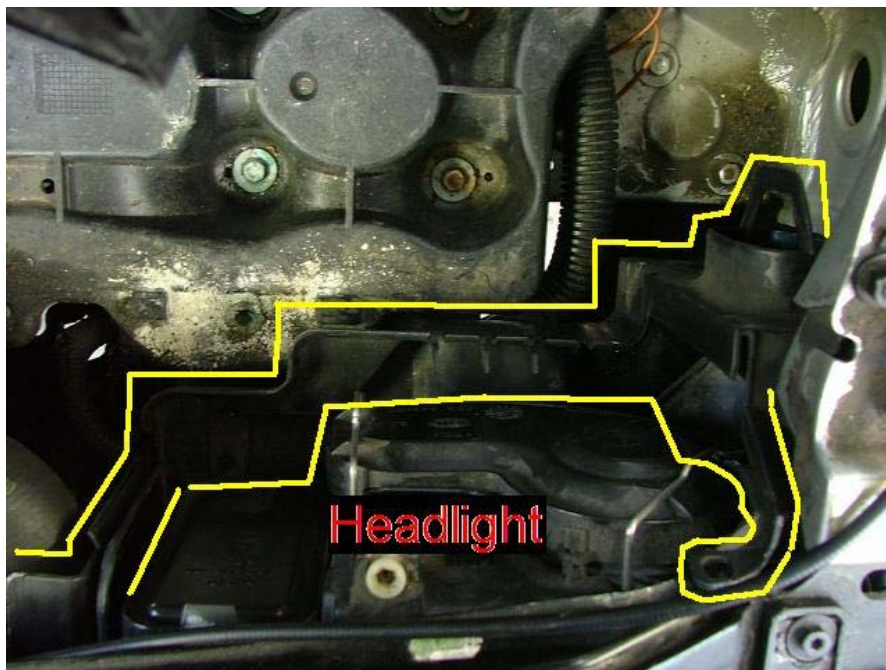


Remove the 10mm nut securing the air duct to the fender, then remove air duct.

MKIV Carbon Fiber Cold Air Intake System Installation Instructions



Remove the 10mm bolt holding the battery cover, remove the battery cover and set it aside. Disconnecting the battery may require you to re-enter your radio anti- theft code.



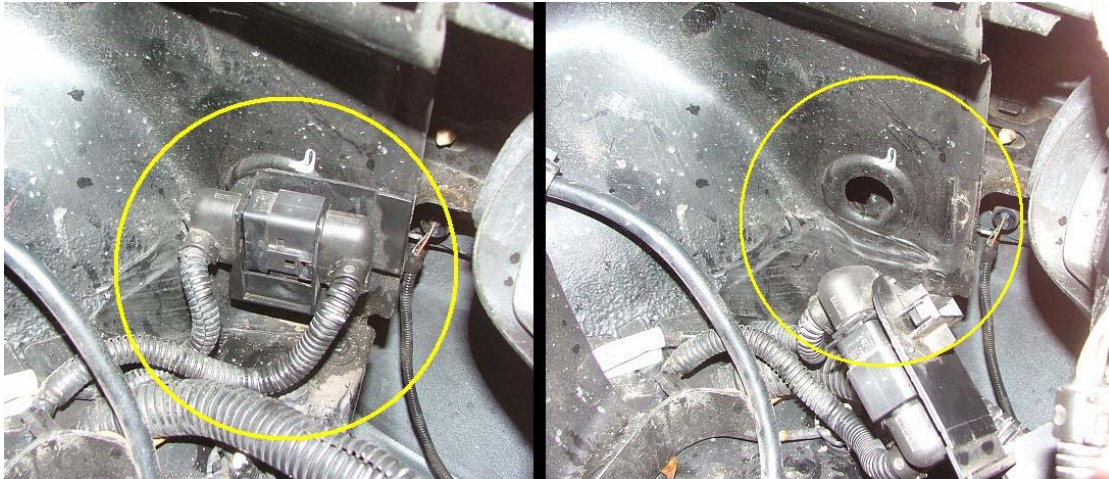
To get the air duct guide (out lined) out from underneath the headlight, you must take a 13mm socket with a 10" extension and remove the front battery hold down bracket. The air duct guide is held in place with 3 plastic rivet type pins, these pins are in locations difficult to reach. Removal of air duct guide with out removing the pins will probably result in broken pins or air duct guide.

MKIV Carbon Fiber Cold Air Intake System Installation Instructions



Step Three: Installation of the cold air intake pipe

VERIFY THAT THE INTAKE PIPE IS FREE FROM ALL DUST, DIRT AND DEBRIS PRIOR TO INSTALLATION.



To ensure intake pipe clearance, the clip must be removed from the inner fender. Once removed, tuck it to the side.



Attach the intake pipe to the mass air flow sensor using the supplied silicone hose connector and 3" clamps. Once satisfied with mounting position, tighten the clamp secure the intake.

MKIV Carbon Fiber Cold Air Intake System Installation Instructions



Position the lower support bracket as shown in the above picture and bolt the bracket to the lower fender.

Then place the clamp in front of the bracket and tighten.



The above picture shows the bracket installed, and the intake positioned against the bracket. Install the clamp around the notched part of bracket and silicone coupler to secure lower half of intake.

MKIV Carbon Fiber Cold Air Intake System Installation Instructions



Install the supplied cushioned loop clamp as shown.



Tuck connector out of the way, behind the intake pipe as shown.

When reinstalling the battery tray, be careful when positioning the wiring loom to avoid pinching any wires.

MKIV Carbon Fiber Cold Air Intake System Installation Instructions



Attach the High Flow Intake Filter to the end of the intake Pipe

MKIV Carbon Fiber Cold Air Intake System Installation Instructions



Step Four: Breather Filter Installation

Clip the supplied adapter into the female breather tube that was previously connected to the back of the air box.



Using zip ties, Secure the breather filter out of the way of all shifting and radiator components.

Step Five: Finishing Up

Inspect and double-check your work: Be sure that all connections are tight, all tools are accounted for, and all pieces supplied in the kit are used. Start the car and let idle. Listen for any unusual noises. Once everything checks out close the hood and go enjoy the added power and sound from your **ECS XAS** Cold Air Intake Kit.